

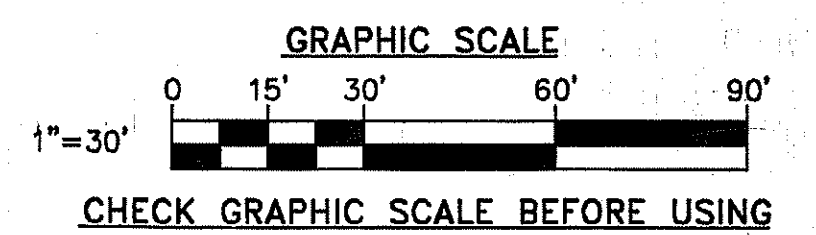
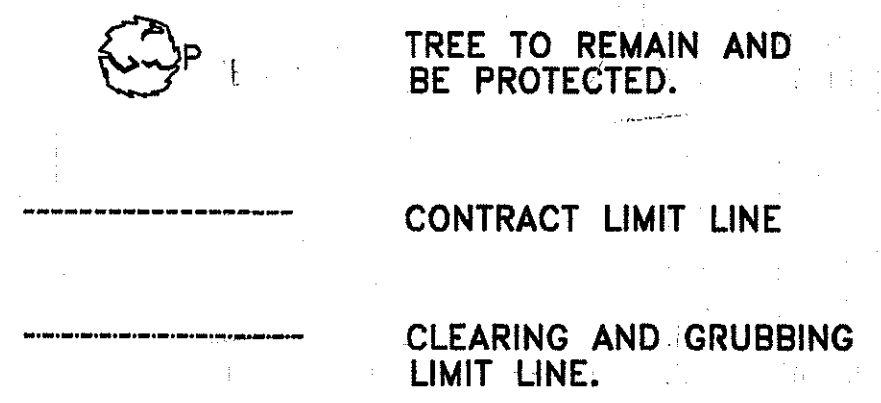
**TREE REMOVAL SCHEDULE**

TREE NO.	CALIPER	DESCRIPTION
1146	2"	OAK
1147	16"	OAK
1150	8"	OAK
1151	8"	OAK
1158	6"	OAK
1186	8"	OAK
1187	14"	OAK
1188	12"	OAK
1189	12"	OAK
1190	20"	OAK
1191	24"	OAK
1192	6"	TWIN MAPLES
1194	12"	OAK
1195	16"	OAK
1196	14"	OAK
1197	20"	OAK
1198	12"	HARDWOOD
1202	6"	OAK
1204	30"	OAK
1207	20"	OAK
1208	10"	HARDWOOD
1209	6"	OAK
1210	8"	MAPLE
1211	20"	HARDWOOD
1212	20"	OAK
1213	18"	OAK
1215	3"	4 HARDWOODS
1216	8"	HARDWOOD
1217	20"	OAK
1218	16"	OAK
1219	16"	OAK
1220	18"	OAK
1221	12"	OAK
1235	16"	OAK
1236	18"	MAPLE
1239	20"	OAK
1240	6"	MAPLE
1241	10"	HARDWOOD
1242	6"	MAPLE
1247	12"	OAK
1248	6"	OAK
1250	16", 20"	TWIN OAKS
1271	16"	OAK
1272	12"	OAK
1277	18"	OAK
1278	18"	OAK
1279	8"	OAK
1281	6"	HARDWOOD

**NOTES:**

- SEE NAVFAC DWG. 2149958 FOR ADDITIONAL LEGEND INFORMATION, ABBREVIATIONS, AND UTILITY DATA.
- THE WOODED AREA CONSISTS OF 6" DIA. OR GREATER TREES SPACED APPROXIMATELY 10' TO 15' APART. THE WOODED AREA IS INUNDATED WITH THORNY VINES.
- THE WOODED AREA CONTAINS SCATTERED BOULDERS OF APPROXIMATELY 2' IN SIZE. LARGER INDIVIDUAL BOULDERS ARE NOTED.
- SEE NAVFAC DWGS. 2149965 AND 2140009 FOR ADDITIONAL REMOVAL INFORMATION.
- TREES TO REMAIN WITHIN THE CONTRACT LIMIT LINE SHALL HAVE TRUNKS AND GROUND AREA 10' FROM TRUNK PROTECTED FROM CONSTRUCTION EQUIPMENT AND EXCAVATION BY PHYSICAL BARRIERS. PRUNE TREES IN ACCORDANCE WITH SPECIFICATIONS.
- OVERHEAD ELECTRIC CABLES AND TELEPHONE CABLES/POLES TO BE REMOVED BY THE CITY OF GROTON AND SOUTHERN NEW ENGLAND TELEPHONE RESPECTIVELY.
- CONTRACTOR LAYDOWN/STORAGE AREA SHALL BE LOCATED WITHIN THE CONTRACT LIMIT LINE AND ON THE NORTHERN SIDE OF THE SITE, AWAY FROM THE EXISTING BUILDING. COORDINATE WITH THE CONTRACTING OFFICER.

**SYMBOLS**



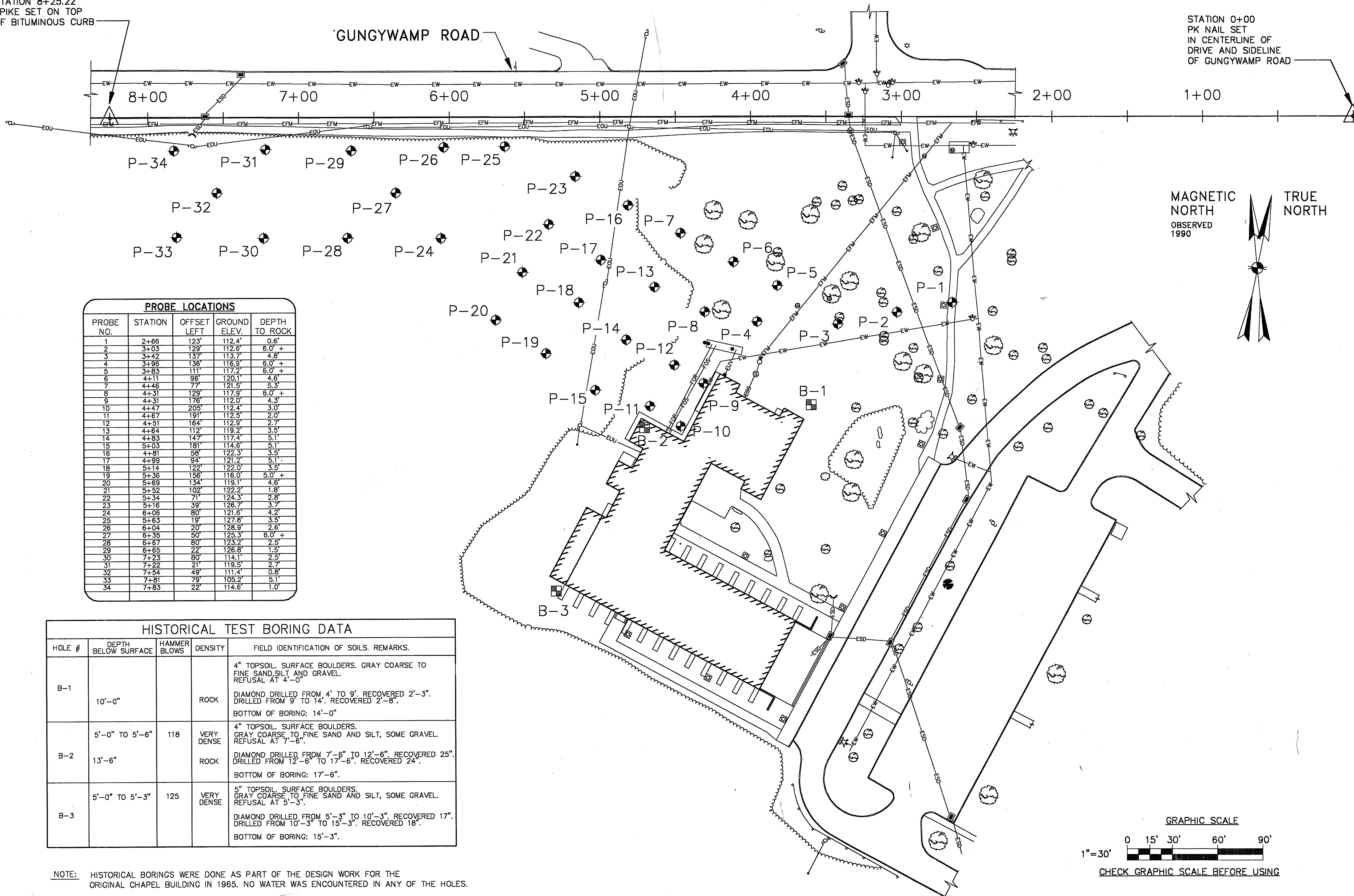
DESIGNED BY: DAVID COOPER	APPROVED: [Signature]
DRAWN BY: SCOTT PORRECA	DATE: 5/17/94
CHECKED BY: [Signature]	PREP BY: M.G.
BRANCH: [Signature]	DESCRIPTION: AS-BUILT/CHANGES
TITLE: [Signature]	REV.:
PROJ. NO.: [Signature]	
DWG. NO.:	
NAVFAC ENGINEERING COMMAND PHOENIX, AZ	
NEW LONDON, GROTON, CT	
NORTHERN DIVISION	
CHAPEL ADDITION	
EXISTING CONDITIONS AND REMOVALS	
DEPARTMENT OF THE NAVY	DATE:
NAVAL BASE	
NAVAL SUBMARINE BASE	
SAFETY TO:	
CODE I.D. NO. 80091	
SCALE: 1" = 30'	
SPEC. NO. 04-90-0039	
CONSTR. CONTR. NO. N62472-90-C-0039	
NAVFAC DRAWING NO. 2149956	
SHEET 3 OF 6	
SIZE: D	DIS. SH. NO. C-1

B1001-50

STATION 8+25.22  
SPIKE SET ON TOP  
OF BITUMINOUS CURB

GUNGYWAMP ROAD

STATION 0+00  
PK NAIL SET  
IN CENTERLINE OF  
DRIVE AND SIDELINE  
OF GUNGYWAMP ROAD

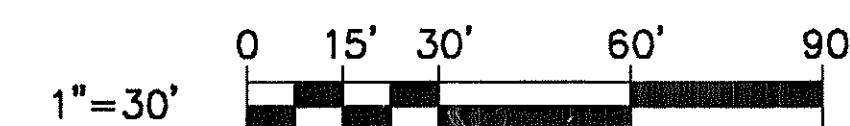


PROBE LOCATIONS				
PROBE NO.	STATION	OFFSET LEFT	GROUND ELEV.	DEPTH TO ROCK
1	2+66	123'	112.4'	0.6'
2	3+03	129'	112.6'	6.0' +
3	3+42	137'	113.7'	4.8'
4	3+96	136'	116.9'	6.0' +
5	3+83	111'	117.2'	6.0' +
6	4+11	96'	120.1'	4.6'
7	4+46	77'	121.5'	5.3'
8	4+31	129'	117.9'	6.0' +
9	4+31	176'	112.0'	4.3'
10	4+47	205'	112.4'	3.0'
11	4+67	191'	112.5'	2.0'
12	4+51	164'	112.9'	2.7'
13	4+64	112'	119.2'	3.5'
14	4+83	147'	117.4'	5.1'
15	5+03	181'	114.6'	5.1'
16	4+81	58'	122.3'	3.5'
17	4+99	94'	121.2'	5.1'
18	5+14	122'	122.0'	3.5'
19	5+36	156'	116.0'	5.0' +
20	5+69	134'	119.1'	4.6'
21	5+52	102'	122.2'	1.8'
22	5+34	71'	124.3'	2.8'
23	5+16	39'	126.7'	3.7'
24	6+06	80'	121.6'	4.2'
25	5+63	19'	127.8'	3.5'
26	6+04	20'	128.9'	2.6'
27	6+36	50'	128.3'	6.0' +
28	6+67	80'	123.2'	2.5'
29	6+65	22'	126.8'	1.5'
30	7+23	80'	114.1'	2.5'
31	7+22	21'	119.5'	2.7'
32	7+54	49'	111.4'	0.8'
33	7+81	79'	105.2'	5.1'
34	7+83	22'	114.6'	1.0'

HISTORICAL TEST BORING DATA				
HOLE #	DEPTH BELOW SURFACE	HAMMER BLOWS	DENSITY	FIELD IDENTIFICATION OF SOILS. REMARKS.
B-1	10'-0"			4" TOPSOIL. SURFACE BOULDERS. GRAY COARSE TO FINE SAND, SILT, AND GRAVEL. REFUSAL AT 4'-0". DIAMOND DRILLED FROM 4' TO 9'. RECOVERED 2'-3". DRILLED FROM 9' TO 14'. RECOVERED 2'-8". BOTTOM OF BORING: 14'-0"
B-2	5'-0" TO 5'-6" 13'-6"	118	VERY DENSE	4" TOPSOIL. SURFACE BOULDERS. GRAY COARSE TO FINE SAND AND SILT, SOME GRAVEL. REFUSAL AT 7'-6". DIAMOND DRILLED FROM 7'-6" TO 12'-6". RECOVERED 25". DRILLED FROM 12'-6" TO 17'-6". RECOVERED 24". BOTTOM OF BORING: 17'-6"
B-3	5'-0" TO 5'-3"	125	VERY DENSE	5" TOPSOIL. SURFACE BOULDERS. GRAY COARSE TO FINE SAND AND SILT, SOME GRAVEL. REFUSAL AT 5'-3". DIAMOND DRILLED FROM 5'-3" TO 10'-3". RECOVERED 17". DRILLED FROM 10'-3" TO 15'-3". RECOVERED 18". BOTTOM OF BORING: 15'-3"

NOTE: HISTORICAL BORINGS WERE DONE AS PART OF THE DESIGN WORK FOR THE ORIGINAL CHAPEL BUILDING IN 1965. NO WATER WAS ENCOUNTERED IN ANY OF THE HOLES.

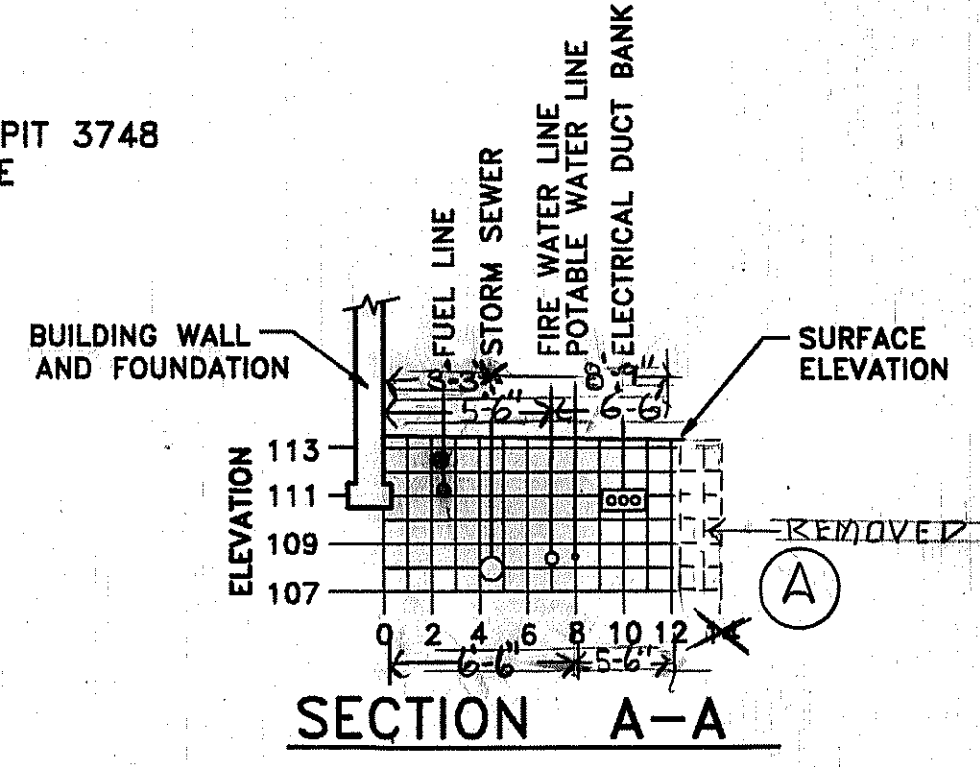
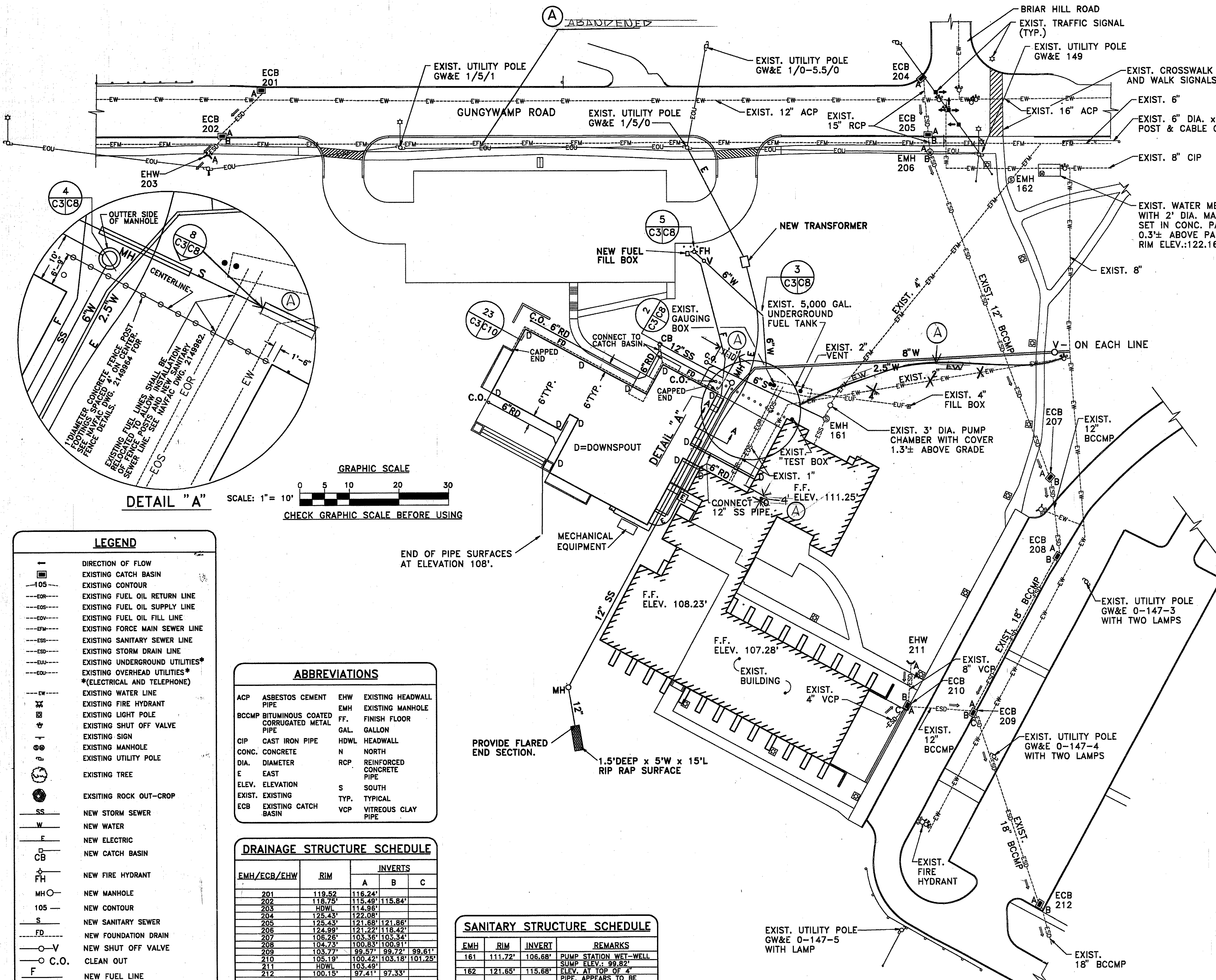
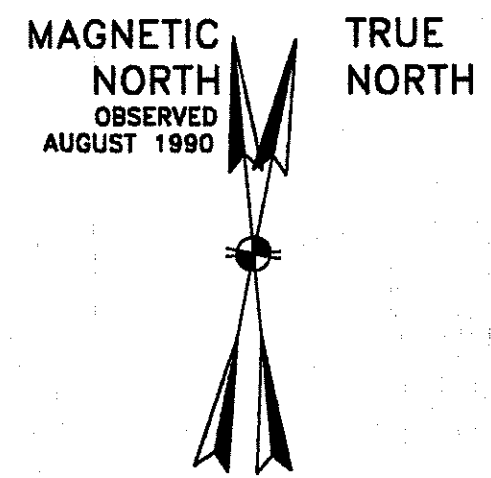
GRAPHIC SCALE



CHECK GRAPHIC SCALE BEFORE USING

REVISION	DATE	APPROVED	DESIGNER	DESCRIPTION	REV.
AS-BUILT AND CHANGES	11-1-94	DAVID COOPER	SCOTT PORRECA		
NORTHERN DIVISION CHAPEL ADDITION PROBE LOCATION PLAN HISTORICAL BORING DATA					
NAVFAC ENGINEERING COMMAND PHILADELPHIA, PA. NEW LONDON, GROTON, CT. NAVFAC SUBMARINE BASE					
DEPARTMENT OF THE NAVY NAVY BASE NAVY SUBMARINE BASE					
SAT TO	DATE				
CODE LD. NO.	80091				
SCALE	1" = 30'				
SPEC. NO.	04-90-0039				
CONTRACTOR NO.	162472-90-C-0039				
NAVFAC DRAWING NO.	2149957				
SHEET	4 OF 61				
SIZE	D C-2				

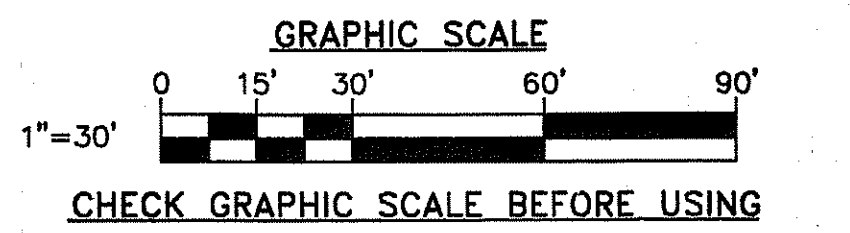
B1001-51



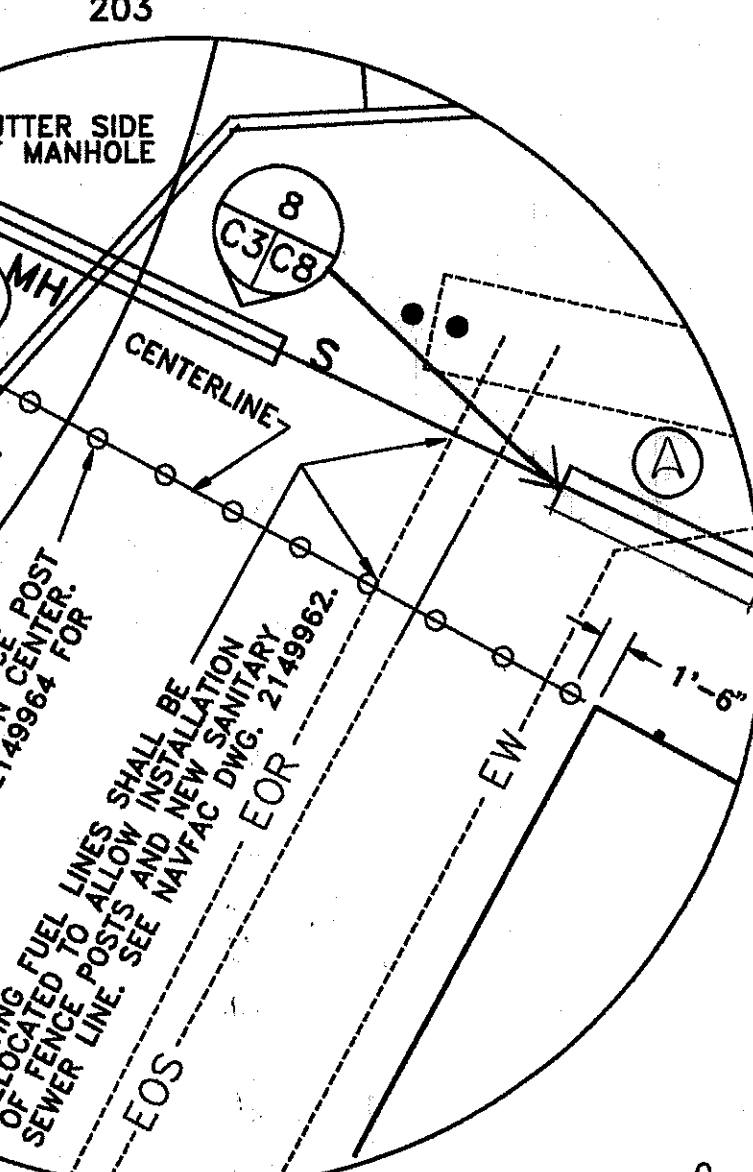
SCALE: 1" = 8'

**SEQUENCE OF WORK**  
 CONTRACTOR SHALL PROVIDE ALL NEW UTILITIES TO CONNECTION POINTS ON EAST SIDE OF NEW BUILDING, INCLUDING NEW ELECTRICAL SERVICE AND TELEPHONE CONDUIT TO EXISTING BUILDING PRIOR TO REMOVAL OF EXISTING POLES AND CABLE BY LOCAL UTILITY COMPANIES. COORDINATE SERVICE CHANGEOVER TO EXISTING BUILDING WITH CONTRACTING OFFICER, CITY OF GROTON AND SOUTHERN NEW ENGLAND TELEPHONE COMPANY. NEW ELECTRICAL SERVICE TO THE EXISTING BUILDING SHALL BE INSTALLED AND ACCEPTED BY CONTRACTING OFFICER PRIOR TO REMOVAL OF EXISTING POLES AND CABLE.

- NOTES:**
- SEE NAVFAC DWG. 2149962, UTILITY PROFILES FOR NEW UTILITY RIM AND INVERT ELEVATIONS.
  - SEE NAVFAC DWG. 2150009 FOR ELECTRICAL SITE PLAN AND DETAILS.
  - UTILITY LINE ROUTES THROUGH THE SITE AVOID DAMAGING TREES TO REMAIN IN THE AREA TO BE CLEARED. INSTALL UTILITIES AS SHOWN ON PLAN.
  - SEE NAVFAC DWG. 2150003 FOR FUEL FILL BOX/LINE DETAILS.
  - ALL CLEANOUTS SHALL BE FLUSH WITH THE FINISHED GRADE.
  - CONNECT ALL DOWNSPOUTS SHOWN (D) TO THE UNDERGROUND ROOF DRAIN WITH A CAST IRON DOWNSPOUT SHOE AND A 45 DEGREE JOINT BETWEEN THE LATERAL AND MAIN PIPE.



CHECK GRAPHIC SCALE BEFORE USING



DETAIL "A"

SCALE: 1" = 10'

GRAPHIC SCALE

CHECK GRAPHIC SCALE BEFORE USING

**LEGEND**

—	DIRECTION OF FLOW
—	EXISTING CATCH BASIN
—	EXISTING CONTOUR
—	EXISTING FUEL OIL RETURN LINE
—	EXISTING FUEL OIL SUPPLY LINE
—	EXISTING FUEL OIL FILL LINE
—	EXISTING FORCE MAIN SEWER LINE
—	EXISTING SANITARY SEWER LINE
—	EXISTING STORM DRAIN LINE
—	EXISTING UNDERGROUND UTILITIES*
—	EXISTING OVERHEAD UTILITIES*
—	*(ELECTRICAL AND TELEPHONE)
—	EXISTING WATER LINE
—	EXISTING FIRE HYDRANT
—	EXISTING LIGHT POLE
—	EXISTING SHUT OFF VALVE
—	EXISTING SIGN
—	EXISTING MANHOLE
—	EXISTING UTILITY POLE
—	EXISTING TREE
—	EXISTING ROCK OUT-CROP
SS	NEW STORM SEWER
W	NEW WATER
F	NEW ELECTRIC
CB	NEW CATCH BASIN
FH	NEW FIRE HYDRANT
MHO	NEW MANHOLE
105	NEW CONTOUR
S	NEW SANITARY SEWER
FD	NEW FOUNDATION DRAIN
V	NEW SHUT OFF VALVE
C.O.	CLEAN OUT
F	NEW FUEL LINE
RD	UNDERGROUND ROOF DRAIN

**ABBREVIATIONS**

ACP	ASBESTOS CEMENT PIPE	EHW	EXISTING HEADWALL
BCCMP	BITUMINOUS COATED CORRUGATED METAL PIPE	EMH	EXISTING MANHOLE
CIP	CAST IRON PIPE	FF	FINISH FLOOR
CONC.	CONCRETE	GAL	GALLON
DIA.	DIAMETER	HDWL	HEADWALL
E	EAST	N	NORTH
ELEV.	ELEVATION	RCP	REINFORCED CONCRETE PIPE
EXIST.	EXISTING	S	SOUTH
ECB	EXISTING CATCH BASIN	TYP.	TYPICAL
		VCP	VITREOUS CLAY PIPE

**DRAINAGE STRUCTURE SCHEDULE**

EMH/ECB/EHW	RIM	INVERTS		
		A	B	C
201	119.52	116.24'		
202	118.75	115.49'	115.84'	
203	HDWL	114.96'		
204	125.43'	122.08'		
205	125.43'	121.88'	121.86'	
206	124.99'	121.22'	118.42'	
207	106.28'	103.36'	103.34'	
208	104.73'	100.83'	100.91'	
209	103.77'	99.57'	99.72'	99.61'
210	105.19'	100.42'	103.18'	101.25'
211	HDWL	103.49'		
212	100.15'	97.41'	97.33'	

**SANITARY STRUCTURE SCHEDULE**

EMH	RIM	INVERT	REMARKS
161	111.72'	106.68'	PUMP STATION WET-WELL SUMP ELEV.: 99.82'
162	121.65'	115.68'	ELEV. AT TOP OF 4" PIPE, APPEARS TO BE A CLEANOUT MANHOLE

REVISIONS:

NO.	DESCRIPTION	DATE
1	CHANGED TO AS-BUILT	11/27/91

APPROVED: [Signature]

DATE: 11/27/91

PREP BY: M.G.

DATE: 11/27/91

DESIGNER: DAVID COOPER

CHECKER: SCOTT PORRICA

SCALE: 1" = 30'

GRAPHIC SCALE

0 15' 30' 60' 90'

CHECK GRAPHIC SCALE BEFORE USING

NAVY FACILITIES ENGINEERING COMMAND  
 PHILADELPHIA, PA.  
 NORTHERN DIVISION  
 NEW LONDON, GROTON, CT  
 NAVY BASE  
 NAVY SUBMARINE BASE

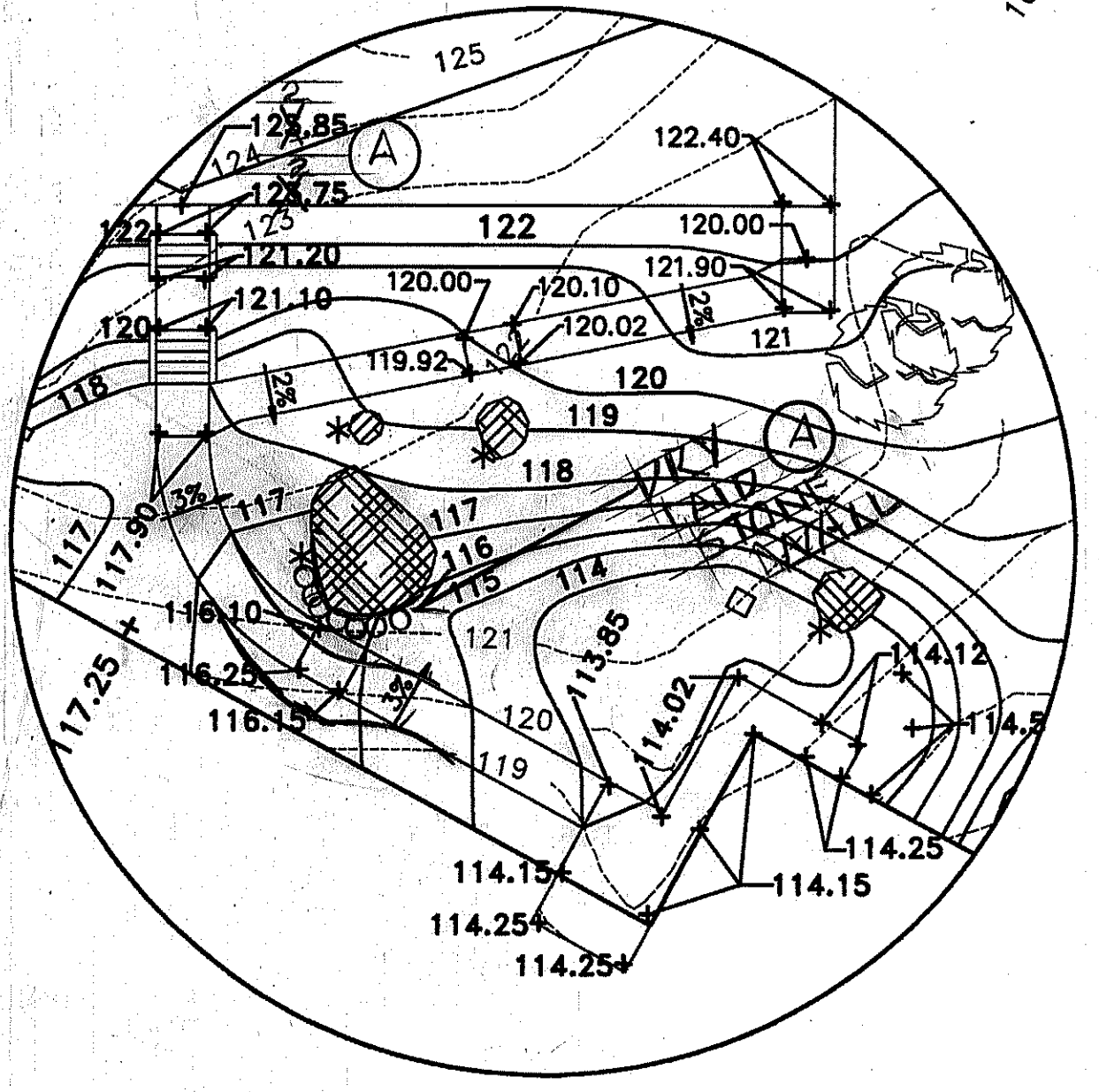
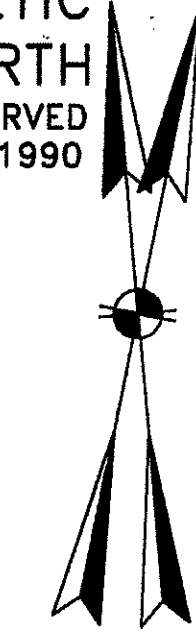
CHAPEL ADDITION  
 UTILITY PLAN

CODE ID. NO. 80091  
 SCALE: 1" = 30'  
 SPEC. NO. 04-90-0039  
 CONSTR. CONTR. NO. N62472-90-C-0039  
 NAVFAC DRAWING NO. 2149958  
 SHEET 5 OF 6  
 DIS. SH. NO. D C-3

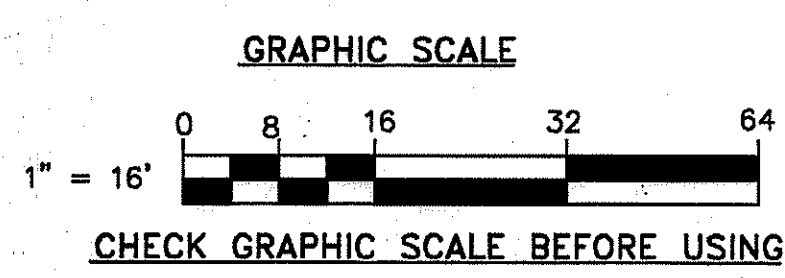
BENCHMARK:  
SPIKE SET IN  
EXIST. UTILITY POLE  
GW&E 0-153-1  
ELEV.:115.27'

MAGNETIC NORTH  
OBSERVED  
AUGUST 1990

TRUE NORTH



DETAIL "A"



NOTES:

1. SILT FENCE SHALL BE LOCATED 2 FEET AWAY FROM THE CONSTRUCTION FENCE ON THE INNER SIDE.
2. ROCK OUTCROPPINGS (BOULDERS) NOTED WITH A \* SYMBOL SHALL NOT BE EXCAVATED. MODIFY EXISTING SHAPE OF BOULDER ONLY TO ACCOMMODATE ADJACENT CONSTRUCTION OR PROPER DRAINAGE.
3. THE SURFACE UNDER THE WOOD DECK AND DECK STAIRS SHALL BE A 6" THICK LAYER OF CRUSHED STONE RANGING FROM 3/4" TO 2" SIZE. THE SOIL BELOW THE STONE SHALL BE GRADED AND COMPACTED AND BE FREE OF DEBRIS BEFORE STONE IS PLACED. SPOT ELEVATIONS SHOWN ARE THE THE TOP OF STONE FINISHED GRADE.
4. ALL AREAS WHERE PLANTS ARE INSTALLED SHALL BE EXCAVATED TO PROVIDE A MINIMUM DEPTH OF SOIL BELOW FINISHED GRADE (2' FOR SHRUBS AND 4" FOR TREES) INCLUDING 6" OF TOPSOIL. SEE NAVFAC DWG. 2149961 FOR THE LOCATION OF PLANTS.
5. ALL GRADING SHALL BE DONE ACCORDING TO PLAN AND PRODUCE SMOOTH GRADES BETWEEN CONTOURS. IN AREAS OF THE SITE WHERE THE FINISHED GRADE IS EXPOSED ROCK, THE SURFACE RELIEF SHALL PROVIDE UNIMPEDED FLOW OF SURFACE DRAINAGE.

SEE NOTE #3  
F.F. ELEV. 114.25'

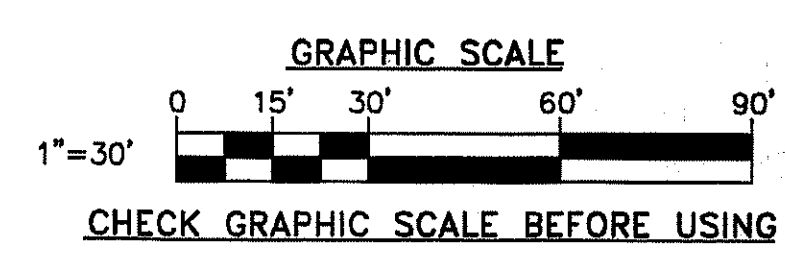
DETAIL "A"  
DECK ELEV. 114.25'

F.F. ELEV. 108.23'

F.F. ELEV. 107.28'

LEGEND

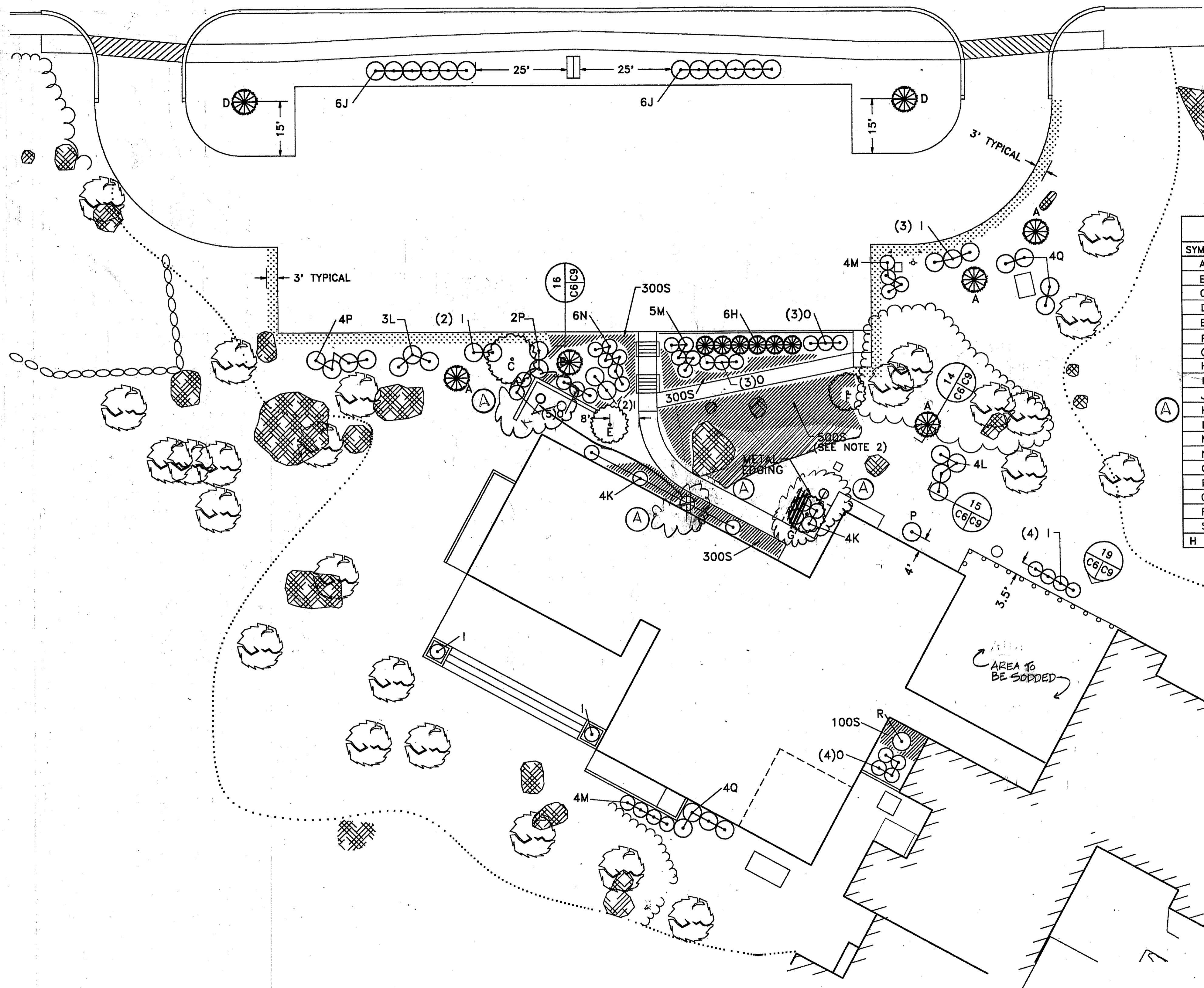
- EXISTING CONTOUR 112
- NEW CONTOUR 122
- NEW SPOT ELEVATION +117.25
- EXISTING TREE
- ROCK LEDGE
- CONSTRUCTION FENCE
- SILT FENCE



DESIGNED BY: DAVID COOPER	APPROVED:
DRAWN BY: SCOTT PORRECA	DATE: 5/12/94
CHECKED BY:	PREP BY: M.G.
DATE:	DESCRIPTION: CHANGED TO AS-BUILT
SCALE:	REV. 1: 11/27/94
PROJECT NO.:	REV. 2: 11/27/94
PROJ. ENG.:	REV. 3: 11/27/94
DATE:	REV. 4: 11/27/94
BY:	REV. 5: 11/27/94
BY:	REV. 6: 11/27/94
BY:	REV. 7: 11/27/94
BY:	REV. 8: 11/27/94
BY:	REV. 9: 11/27/94
BY:	REV. 10: 11/27/94
BY:	REV. 11: 11/27/94
BY:	REV. 12: 11/27/94
BY:	REV. 13: 11/27/94
BY:	REV. 14: 11/27/94
BY:	REV. 15: 11/27/94
BY:	REV. 16: 11/27/94
BY:	REV. 17: 11/27/94
BY:	REV. 18: 11/27/94
BY:	REV. 19: 11/27/94
BY:	REV. 20: 11/27/94
BY:	REV. 21: 11/27/94
BY:	REV. 22: 11/27/94
BY:	REV. 23: 11/27/94
BY:	REV. 24: 11/27/94
BY:	REV. 25: 11/27/94
BY:	REV. 26: 11/27/94
BY:	REV. 27: 11/27/94
BY:	REV. 28: 11/27/94
BY:	REV. 29: 11/27/94
BY:	REV. 30: 11/27/94
BY:	REV. 31: 11/27/94
BY:	REV. 32: 11/27/94
BY:	REV. 33: 11/27/94
BY:	REV. 34: 11/27/94
BY:	REV. 35: 11/27/94
BY:	REV. 36: 11/27/94
BY:	REV. 37: 11/27/94
BY:	REV. 38: 11/27/94
BY:	REV. 39: 11/27/94
BY:	REV. 40: 11/27/94
BY:	REV. 41: 11/27/94
BY:	REV. 42: 11/27/94
BY:	REV. 43: 11/27/94
BY:	REV. 44: 11/27/94
BY:	REV. 45: 11/27/94
BY:	REV. 46: 11/27/94
BY:	REV. 47: 11/27/94
BY:	REV. 48: 11/27/94
BY:	REV. 49: 11/27/94
BY:	REV. 50: 11/27/94
BY:	REV. 51: 11/27/94
BY:	REV. 52: 11/27/94
BY:	REV. 53: 11/27/94
BY:	REV. 54: 11/27/94
BY:	REV. 55: 11/27/94
BY:	REV. 56: 11/27/94
BY:	REV. 57: 11/27/94
BY:	REV. 58: 11/27/94
BY:	REV. 59: 11/27/94
BY:	REV. 60: 11/27/94
BY:	REV. 61: 11/27/94
BY:	REV. 62: 11/27/94
BY:	REV. 63: 11/27/94
BY:	REV. 64: 11/27/94
BY:	REV. 65: 11/27/94
BY:	REV. 66: 11/27/94
BY:	REV. 67: 11/27/94
BY:	REV. 68: 11/27/94
BY:	REV. 69: 11/27/94
BY:	REV. 70: 11/27/94
BY:	REV. 71: 11/27/94
BY:	REV. 72: 11/27/94
BY:	REV. 73: 11/27/94
BY:	REV. 74: 11/27/94
BY:	REV. 75: 11/27/94
BY:	REV. 76: 11/27/94
BY:	REV. 77: 11/27/94
BY:	REV. 78: 11/27/94
BY:	REV. 79: 11/27/94
BY:	REV. 80: 11/27/94
BY:	REV. 81: 11/27/94
BY:	REV. 82: 11/27/94
BY:	REV. 83: 11/27/94
BY:	REV. 84: 11/27/94
BY:	REV. 85: 11/27/94
BY:	REV. 86: 11/27/94
BY:	REV. 87: 11/27/94
BY:	REV. 88: 11/27/94
BY:	REV. 89: 11/27/94
BY:	REV. 90: 11/27/94
BY:	REV. 91: 11/27/94
BY:	REV. 92: 11/27/94
BY:	REV. 93: 11/27/94
BY:	REV. 94: 11/27/94
BY:	REV. 95: 11/27/94
BY:	REV. 96: 11/27/94
BY:	REV. 97: 11/27/94
BY:	REV. 98: 11/27/94
BY:	REV. 99: 11/27/94
BY:	REV. 100: 11/27/94
BY:	REV. 101: 11/27/94
BY:	REV. 102: 11/27/94
BY:	REV. 103: 11/27/94
BY:	REV. 104: 11/27/94
BY:	REV. 105: 11/27/94
BY:	REV. 106: 11/27/94
BY:	REV. 107: 11/27/94
BY:	REV. 108: 11/27/94
BY:	REV. 109: 11/27/94
BY:	REV. 110: 11/27/94
BY:	REV. 111: 11/27/94
BY:	REV. 112: 11/27/94
BY:	REV. 113: 11/27/94
BY:	REV. 114: 11/27/94
BY:	REV. 115: 11/27/94
BY:	REV. 116: 11/27/94
BY:	REV. 117: 11/27/94
BY:	REV. 118: 11/27/94
BY:	REV. 119: 11/27/94
BY:	REV. 120: 11/27/94
BY:	REV. 121: 11/27/94
BY:	REV. 122: 11/27/94
BY:	REV. 123: 11/27/94
BY:	REV. 124: 11/27/94
BY:	REV. 125: 11/27/94
BY:	REV. 126: 11/27/94
BY:	REV. 127: 11/27/94
BY:	REV. 128: 11/27/94
BY:	REV. 129: 11/27/94
BY:	REV. 130: 11/27/94
BY:	REV. 131: 11/27/94
BY:	REV. 132: 11/27/94
BY:	REV. 133: 11/27/94
BY:	REV. 134: 11/27/94
BY:	REV. 135: 11/27/94
BY:	REV. 136: 11/27/94
BY:	REV. 137: 11/27/94
BY:	REV. 138: 11/27/94
BY:	REV. 139: 11/27/94
BY:	REV. 140: 11/27/94
BY:	REV. 141: 11/27/94
BY:	REV. 142: 11/27/94
BY:	REV. 143: 11/27/94
BY:	REV. 144: 11/27/94
BY:	REV. 145: 11/27/94
BY:	REV. 146: 11/27/94
BY:	REV. 147: 11/27/94
BY:	REV. 148: 11/27/94
BY:	REV. 149: 11/27/94
BY:	REV. 150: 11/27/94
BY:	REV. 151: 11/27/94
BY:	REV. 152: 11/27/94
BY:	REV. 153: 11/27/94
BY:	REV. 154: 11/27/94
BY:	REV. 155: 11/27/94
BY:	REV. 156: 11/27/94
BY:	REV. 157: 11/27/94
BY:	REV. 158: 11/27/94
BY:	REV. 159: 11/27/94
BY:	REV. 160: 11/27/94
BY:	REV. 161: 11/27/94
BY:	REV. 162: 11/27/94
BY:	REV. 163: 11/27/94
BY:	REV. 164: 11/27/94
BY:	REV. 165: 11/27/94
BY:	REV. 166: 11/27/94
BY:	REV. 167: 11/27/94
BY:	REV. 168: 11/27/94
BY:	REV. 169: 11/27/94
BY:	REV. 170: 11/27/94
BY:	REV. 171: 11/27/94
BY:	REV. 172: 11/27/94
BY:	REV. 173: 11/27/94
BY:	REV. 174: 11/27/94
BY:	REV. 175: 11/27/94
BY:	REV. 176: 11/27/94
BY:	REV. 177: 11/27/94
BY:	REV. 178: 11/27/94
BY:	REV. 179: 11/27/94
BY:	REV. 180: 11/27/94
BY:	REV. 181: 11/27/94
BY:	REV. 182: 11/27/94
BY:	REV. 183: 11/27/94
BY:	REV. 184: 11/27/94
BY:	REV. 185: 11/27/94
BY:	REV. 186: 11/27/94
BY:	REV. 187: 11/27/94
BY:	REV. 188: 11/27/94
BY:	REV. 189: 11/27/94
BY:	REV. 190: 11/27/94
BY:	REV. 191: 11/27/94
BY:	REV. 192: 11/27/94
BY:	REV. 193: 11/27/94
BY:	REV. 194: 11/27/94
BY:	REV. 195: 11/27/94
BY:	REV. 196: 11/27/94
BY:	REV. 197: 11/27/94
BY:	REV. 198: 11/27/94
BY:	REV. 199: 11/27/94
BY:	REV. 200: 11/27/94

B1001-53





**NOTES:**

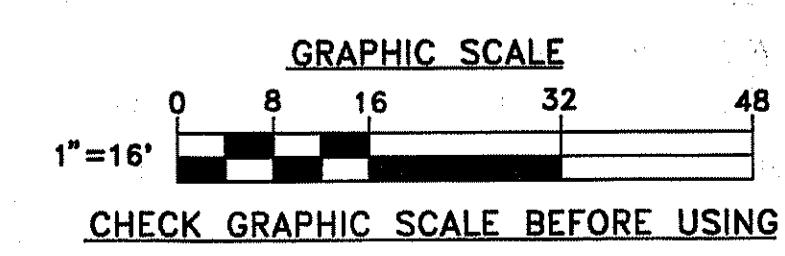
1. ALL EXISTING GRASS AREAS DISTURBED BY CONTRACTOR DURING CONSTRUCTION OPERATIONS SHALL BE RESTORED TO ORIGINAL CONDITION (4 INCHES TOPSOIL AND COMPLETE COVERAGE WITH GRASS).
2. DELETE PLANTING OF GROUNDCOVER IN THIS AREA IF FINISHED GRADE IS EXPOSED ROCK.
3. ALL PLANT MATERIALS SHALL BE PLANTED IN THE LOCATIONS SHOWN. ANY PROPOSED CHANGE REQUIRES APPROVAL FROM THE CONTRACTING OFFICER.

PLANT SCHEDULE					
SYMBOL	#	BOTANICAL NAME	COMMON NAME	SIZE	SPACING
A	4	PINUS NIGRA	AUSTRIAN PINE	6'H	ASOP
B	1	PINUS SYLVESTRIS	SCOTS PINE	6'H	ASOP
C	1	FRAXINUS AMERICANA "AUTUMN PURPLE"	AUTUMN PURPLE WHITE ASH	3"C	ASOP
D	1	PICEA ABIES	WHITE SPRUCE	6'H	ASOP
E	1	PRUNUS SUBHIRTILLA "PENDULA"	WEeping HIGAN CHERRY	2.5"C	ASOP
F	1	CERCIS CANADENSIS	EASTERN REDBUD	14'H	ASOP
G	1	MAGNOLIA STELLATA	STAR MAGNOLIA	14'H	ASOP
H	6	JUNIPEROUS VIRGINIANA "CANAERTII"	CANAERT JUNIPER	6'H	5'
I	13	JUNIPEROUS CHINENSIS "SEA GREEN"	SEA GREEN JUNIPER	3'H	5'
J	12	EUONYMUS ALATUS "COMPACTUS"	DWARF WINGED EUONYMUS	3'H	5'
K	8	<del>RHODODENDRON CAROLINIANUM</del>	<del>CAROLINA RHODODENDRON</del>	3'H	4'
L	7	KALMIA LATIFOLIA	MOUNTAIN LAUREL	3'H	5'
M	13	ABELIA X GRANDIFLORA	GLOSSY ABELIA	3'H	4'
N	6	POTENTILLA FRUTICOSA	BUSH CINQUEFOIL	2'H	4'
O	10	BERBERIS THUNBERGII "ATROPURPUREA"	REDLEAF JAPANESE BARBERRY	3'H	4'
P	7	CORNUS SREICEA	REDOsier DOGWOOD	3'H	4'
Q	13	TAXUS CUSPIDATA "THAYERII"	THAYER JAPANESE YEW	3'H	5'
R	1	MISCANTHUS SINENSIS "PURPARESCENS"	PURPARESCENS JAP. SILVER GRASS	5 GAL	ASOP
S	1500	VINCA MINOR	COMMON PERIWINKLE	2 Y.O.	8"

H = HEIGHT C = CALIPER Y.O. = YEARS OLD GAL = GALLON ASOP = AS SHOWN ON PLAN

**LEGEND**

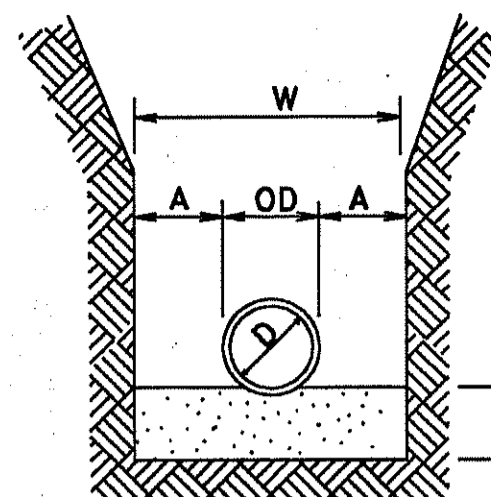
- APPROX. LIMIT OF SEEDING
- METAL EDGING
- AREA PLANTED WITH GROUNDCOVER
- AREA PLANTED WITH SOD
- EXISTING TREE
- NEW DECIDUOUS TREE
- NEW EVERGREEN TREE
- NEW SHRUB
- EXPOSED ROCK



DESIGNED BY: DAVID COOPER  
 DRAWN BY: DC-CADD  
 CHECKED BY: [Signature]  
 DATE: 5/17/77  
 PREP BY: M.G.  
 DESCRIPTION: CHANGLED TO AS-BUILT  
 REV. (A) PHILADELPHIA, PA.  
 NEW LONDON, GROTON, CT  
 NORTHERN DIVISION  
 NAVAL SUBMARINE BASE  
**CHAPEL ADDITION**  
 LANDSCAPING PLAN  
 DEPARTMENT OF THE NAVY  
 NAVY FACILITIES ENGINEERING COMMAND  
 NAVY FOR COMMANDER, NAVFAC  
 APPROVED: [Signature]  
 DATE: [Blank]  
 CODE I.D. NO. 80091  
 SCALE: 1" = 16'  
 SPEC. NO. 04-80-0039  
 CONSTR. CONTR. NO. N62472-90-C-0039  
 NAVFAC DRAWING NO. 2149961  
 SHEET 3 OF 6  
 SIZE: D C-6



NOTE: ROCK PAY LIMIT IS 6" BEYOND "W" ON EACH SIDE OF TRENCH AND 6" BELOW DEPTH REQUIREMENTS FOR SPECIFIC UTILITY.

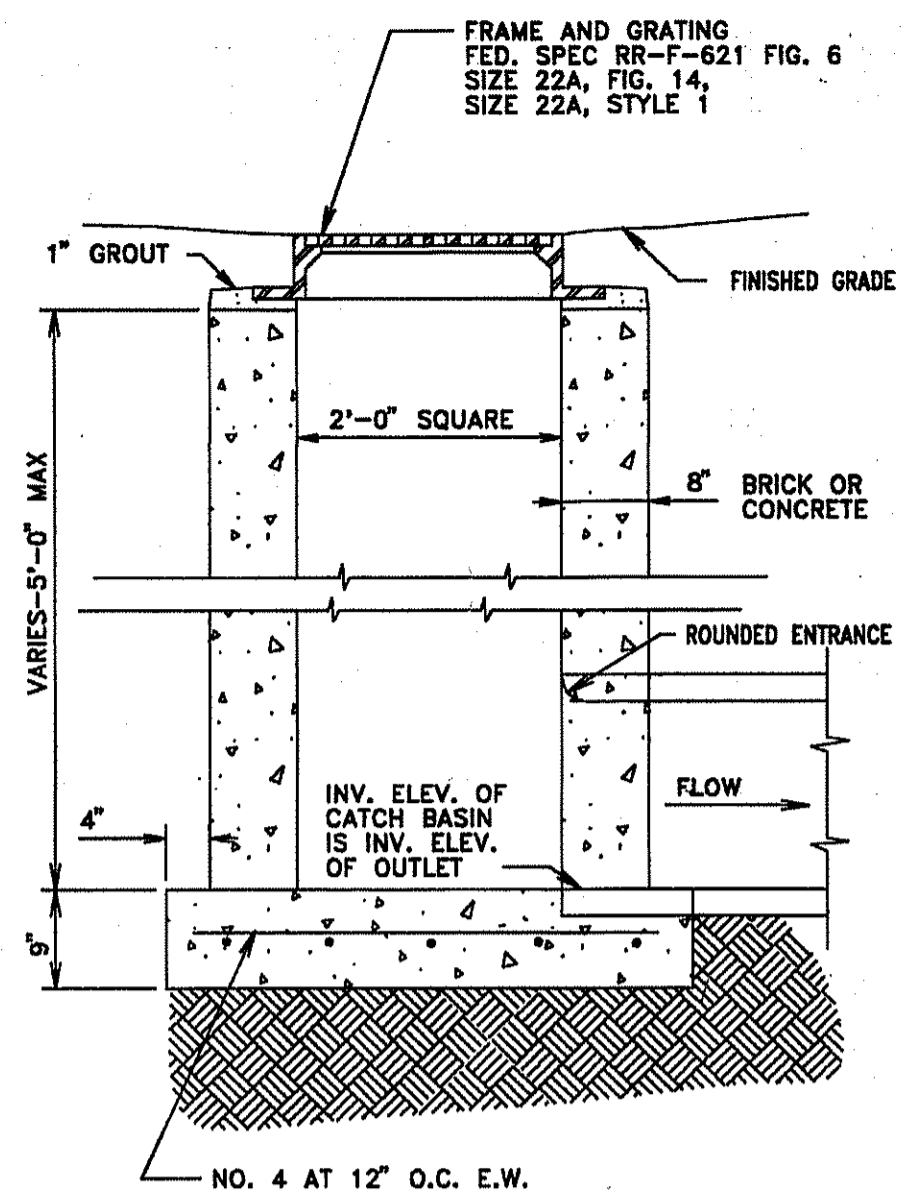


PIPE DIA "D"	MAXIMUM "A"
6" TO 15"	8"
18" TO 21"	10"
24" TO 30"	12"
33" TO 42"	15"
48" & LARGER	18"

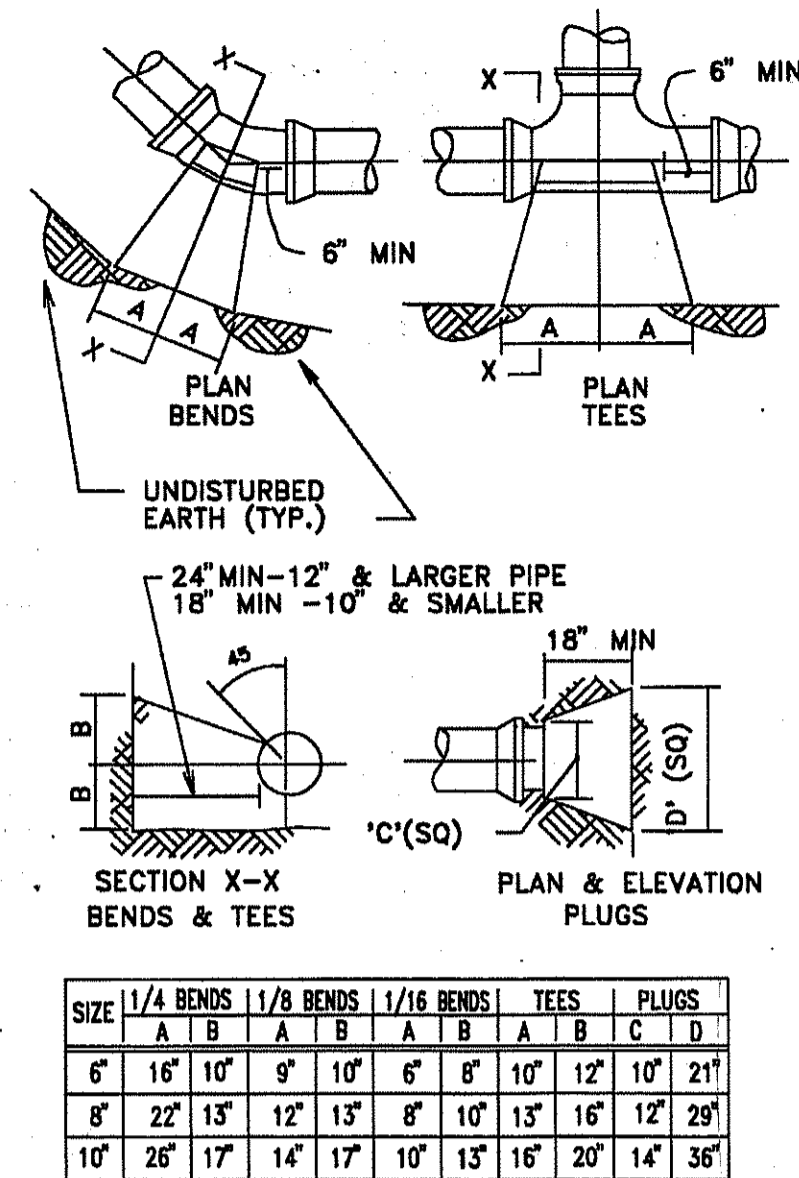
MAXIMUM TRENCH WIDTH "W" TAKEN AT TOP OF PIPE

NOTE: PROVIDE BEDDING IN ACCORDANCE WITH THE SPECIFICATIONS.

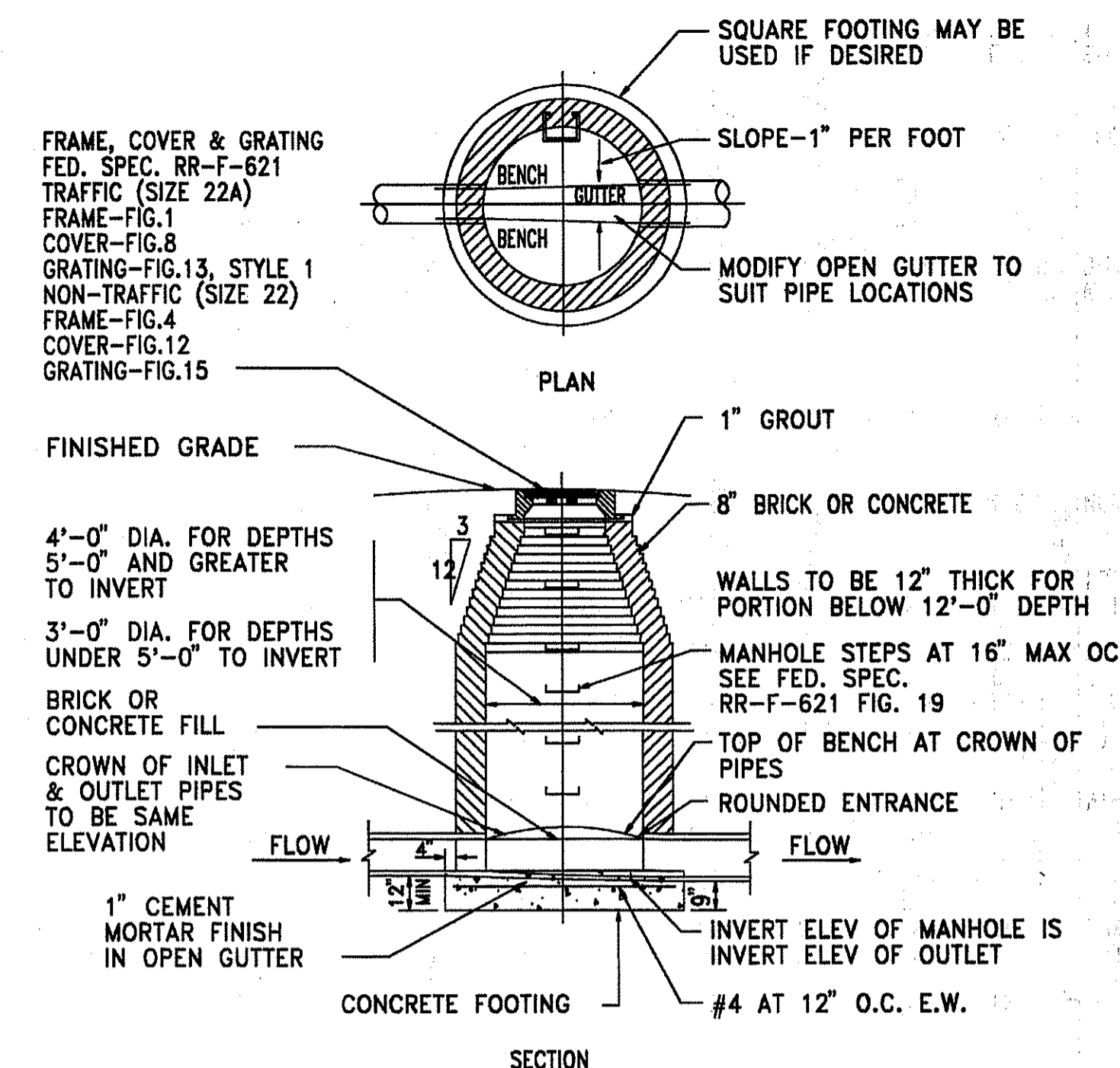
1 STANDARD PIPE TRENCH WIDTH  
C3/C8 NOT TO SCALE



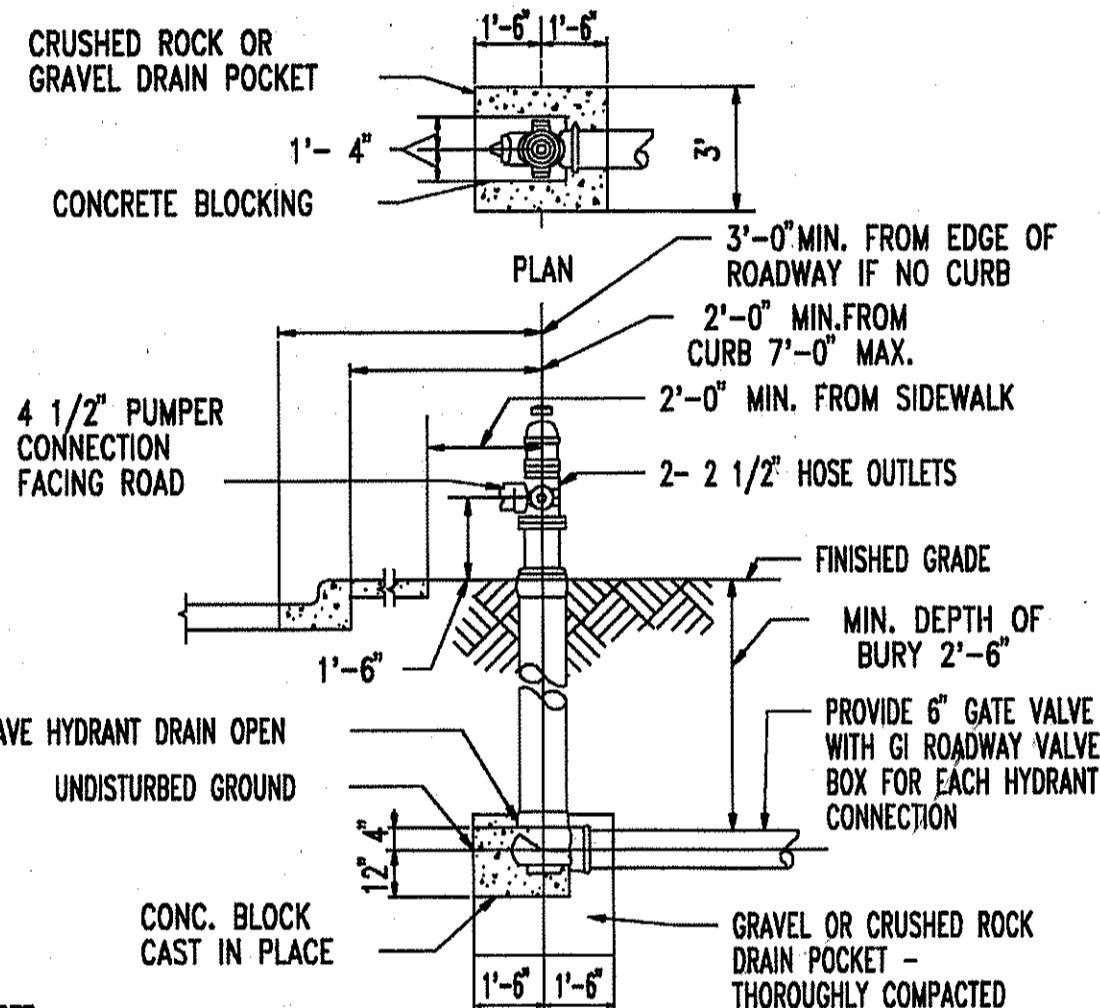
2 STANDARD CATCH BASIN  
C3/C8 18" PIPE AND SMALLER  
(THIS ITEM MAY BE CAST-IN-PLACE OR ASTM C478 PRECAST)



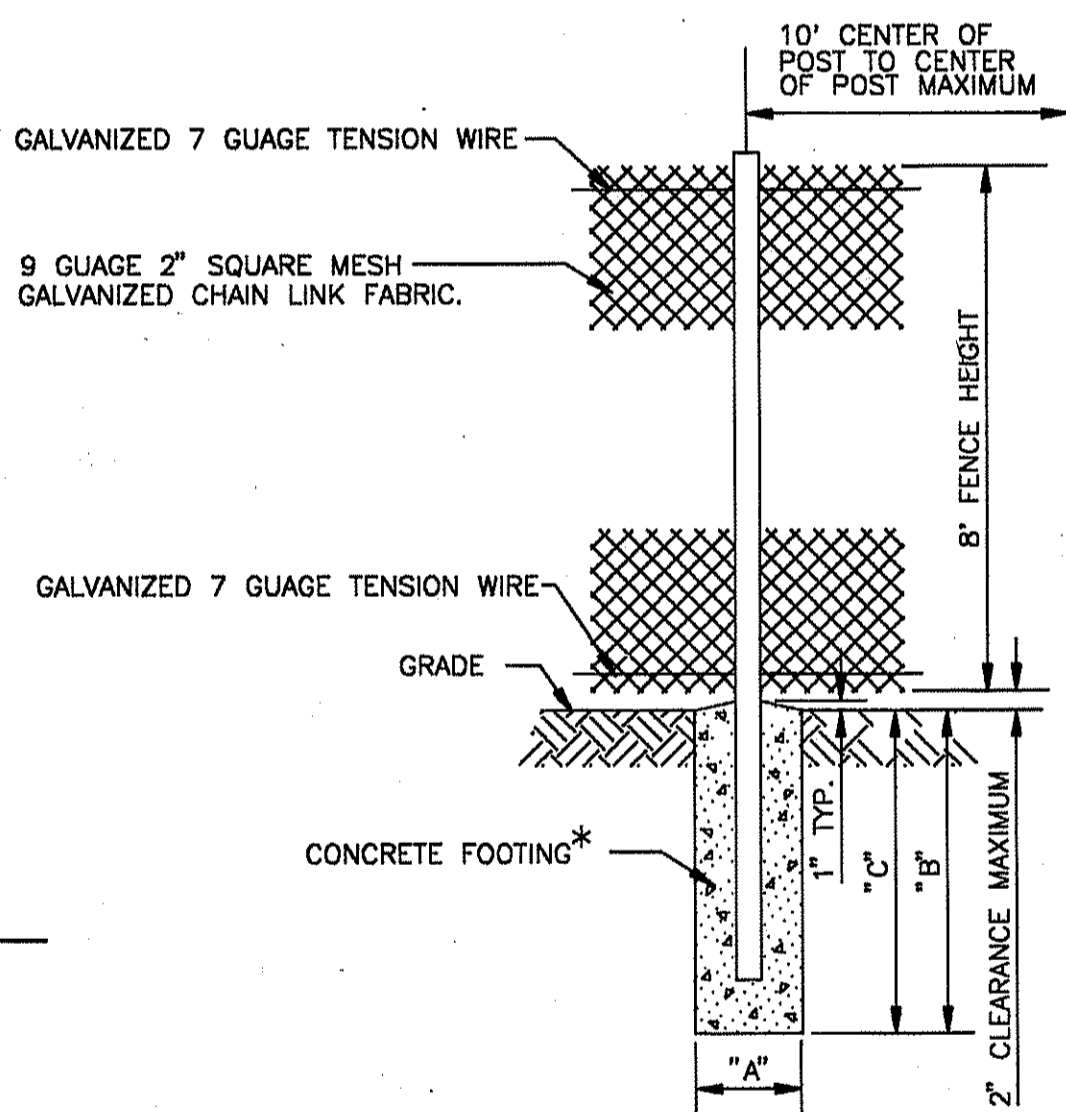
3 THRUST BLOCKS  
C3/C8 NOT TO SCALE



4 STANDARD SANITARY MANHOLE  
C3/C8 (THIS ITEM MAY BE CAST-IN-PLACE OR ASTM C478 PRECAST) N.T.S.



5 FIRE HYDRANT INSTALLATION  
C3/C8 NOT TO SCALE



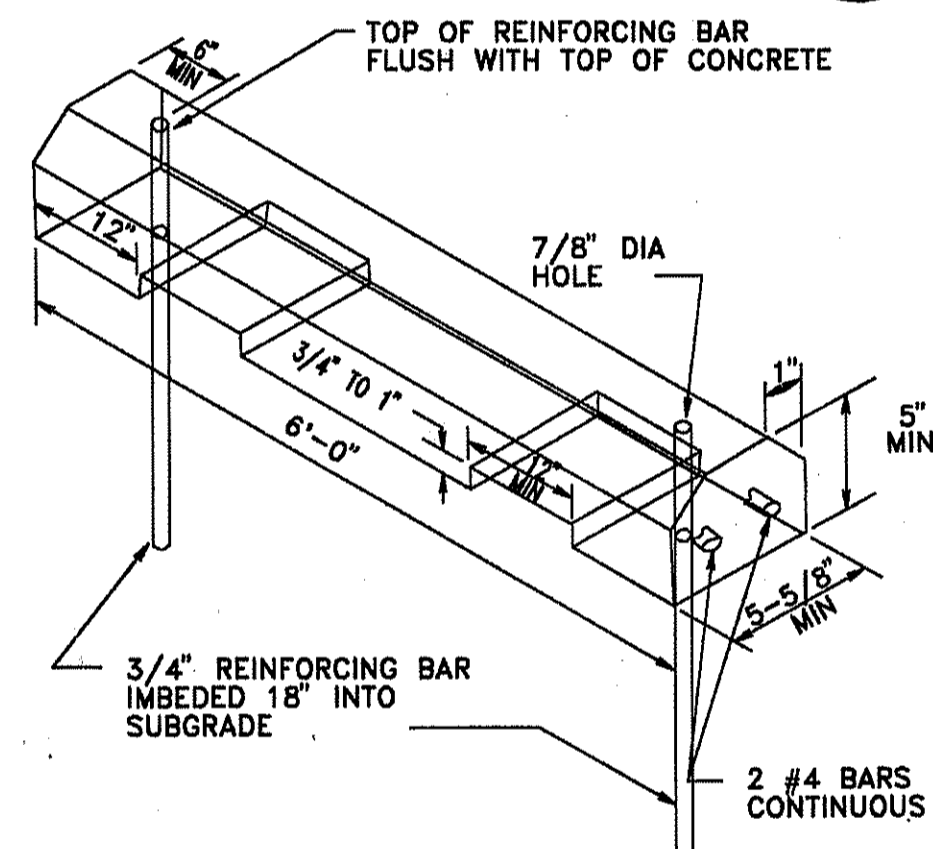
6 CONSTRUCTION FENCE  
C4/C8 NOT TO SCALE

GATE POST					
GATE LEAF WIDTH (OD)	GATE POST FABRIC HEIGHT	"A" DIAM	"B" DEPTH	"C" EMBED	"D" EMBED
3'-6"	2.75'	8.0"	14"	42"	40"
7'-12"	4.00'	8.0"	16"	42"	40"

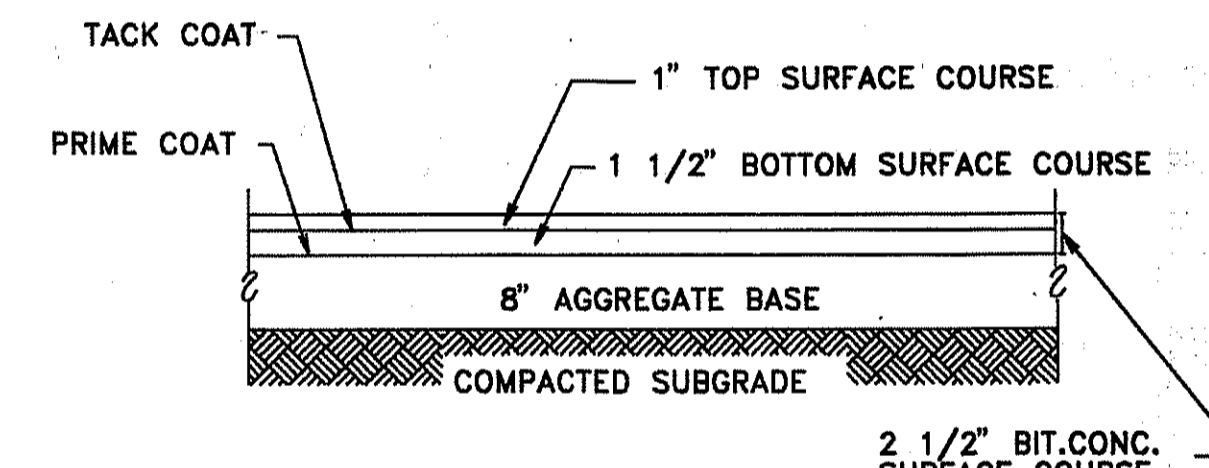
  

LINE AND TERMINAL POSTS					
FABRIC HEIGHT	TYPE POST	"A" DIAM	"B" DEPTH	"C" EMBED	"D" EMBED
8.0'	LINE	8"	32"	30"	
	TERMINAL	10"	32"	30"	

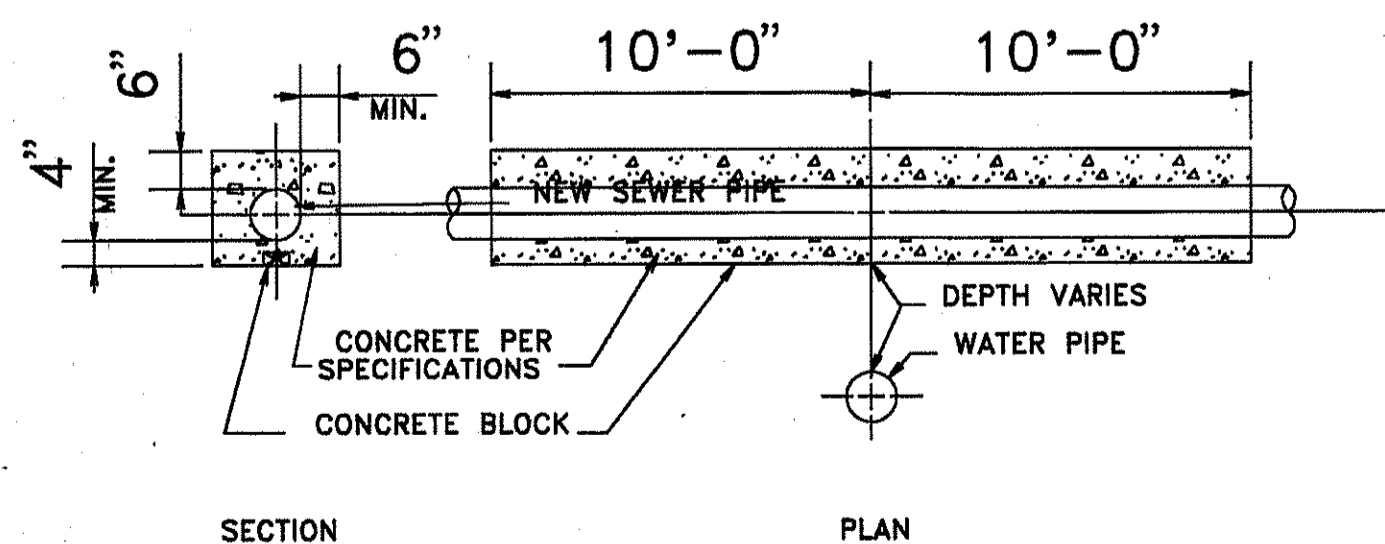
\* CONCRETE IS REQUIRED ONLY FOR GATE AND TERMINAL POSTS. CONCRETE FOOTINGS MUST BE REMOVED UPON COMPLETION OF PROJECT.



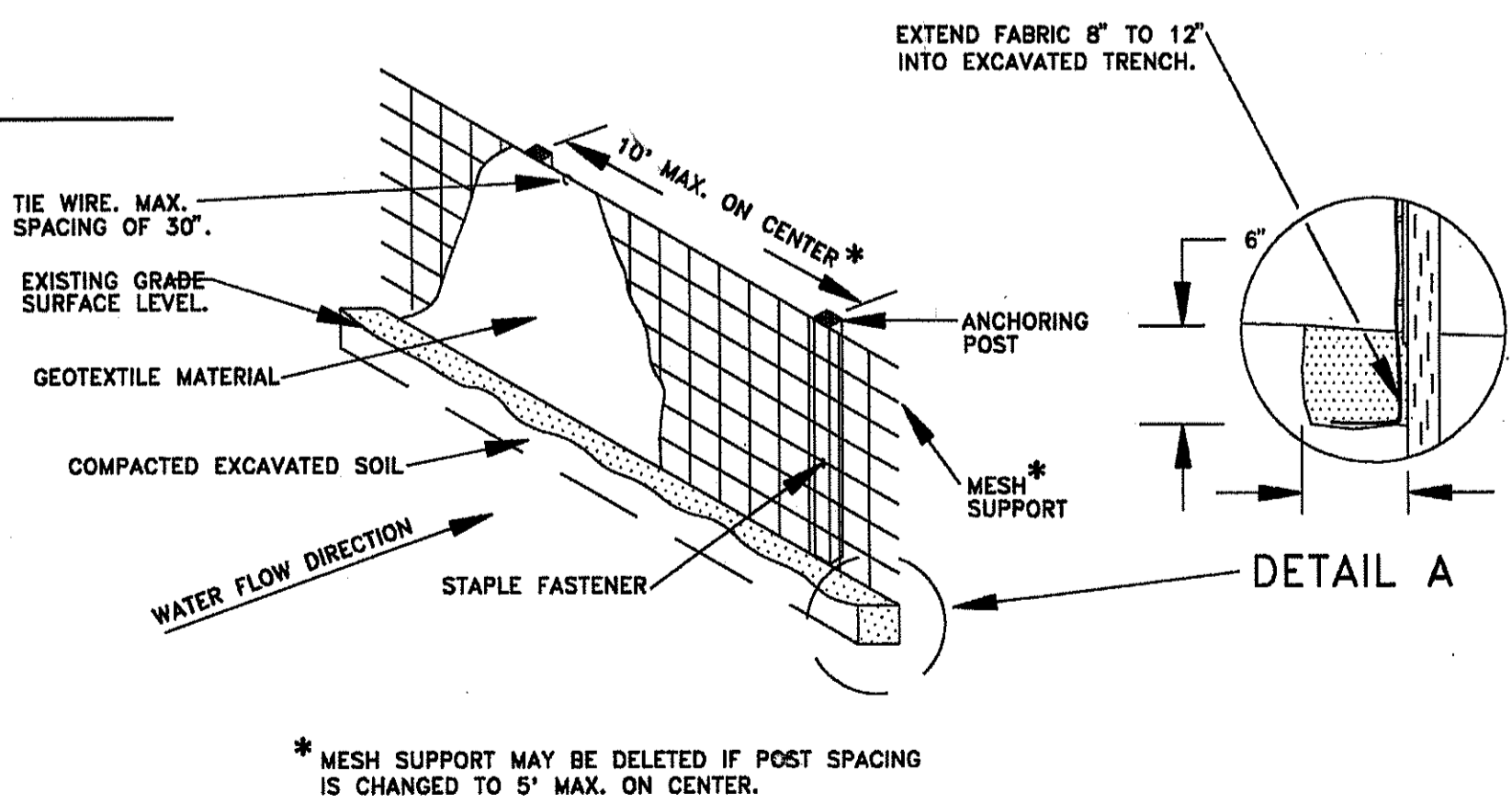
7 PARKING BUMPER  
C5/C8 (PRECAST CONCRETE) N.T.S.



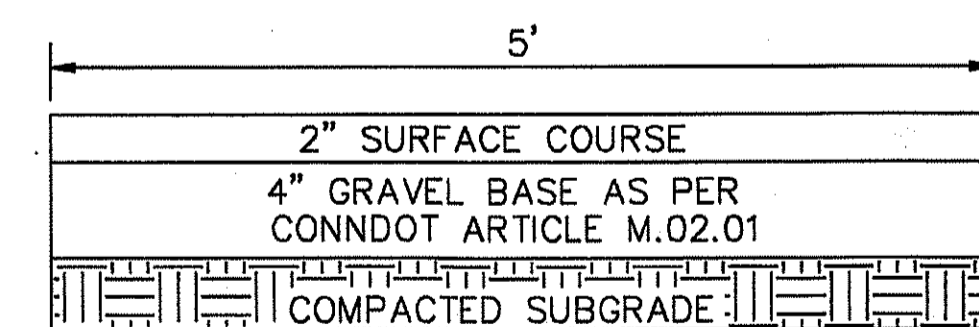
11 NEW BITUMINOUS PAVEMENT  
C5/C8 NOT TO SCALE



8 CONCRETE SEWER ENCASMENT  
C3/C8 NOT TO SCALE

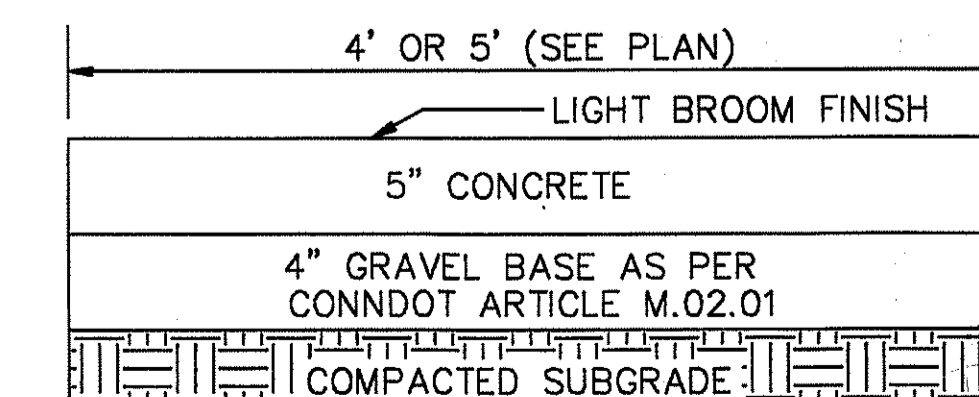


10 SILT FENCE  
C4/C8



12 NEW BITUMINOUS WALK  
C5/C8 NOT TO SCALE

9 STANDARD CURB  
C5/C8 NOT TO SCALE



13 NEW CONCRETE WALK  
C5/C8 NOT TO SCALE

REVISIONS:

NO.	DESCRIPTION	DATE	BY	APP'D
1	AS-BUILT CHANGES	5/12/93	DAVID COOPER	DC-CADD

APPROVED: DAVID COOPER

PHILADELPHIA, PA. NEW LONDON, GROTON, CT. NORTHERN DIVISION

CHAPEL ADDITION

DEPARTMENT OF THE NAVY

NAVFAC DRAWING NO. 2149963

SCALE: AS SHOWN

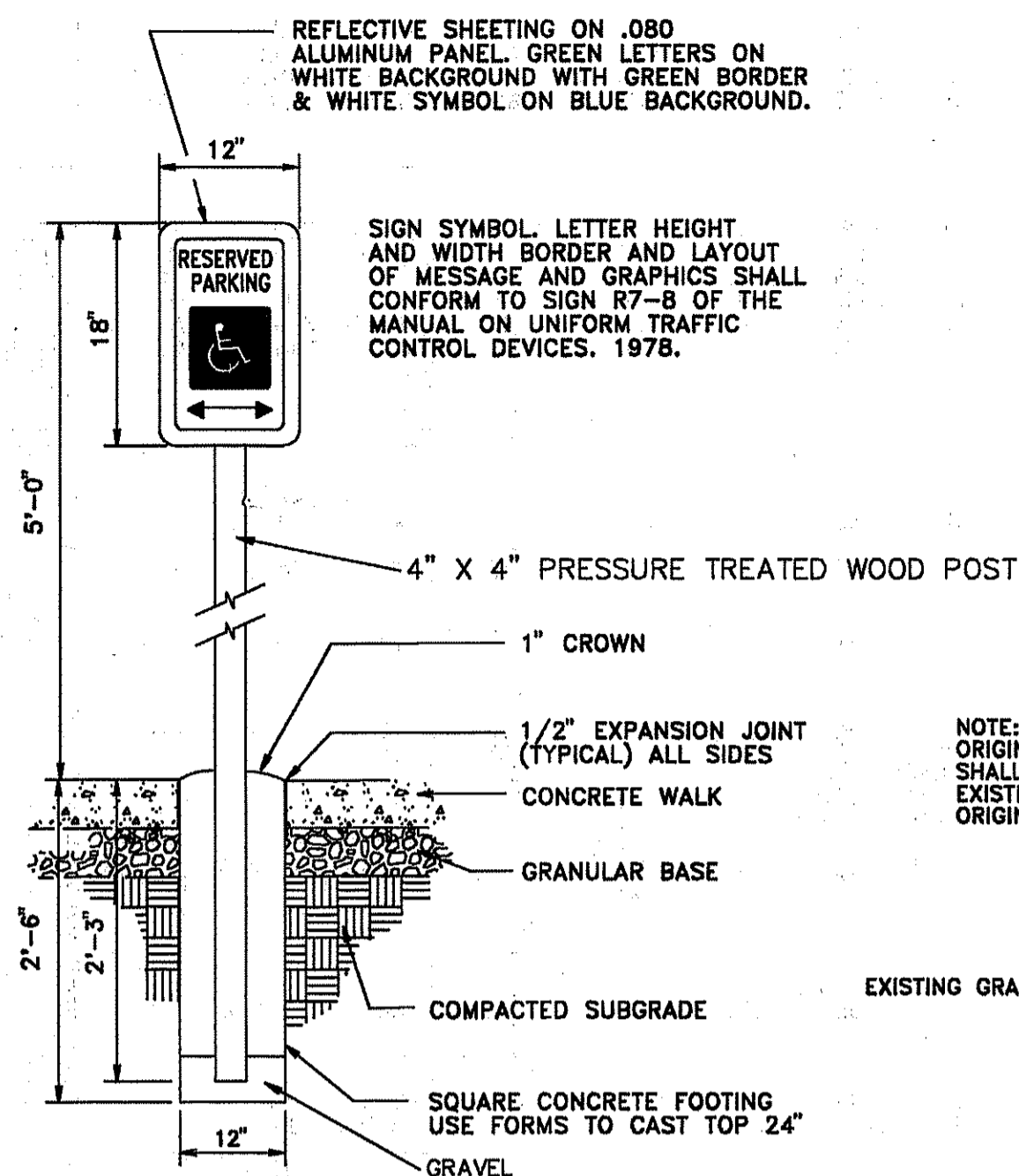
CONSTR. CONTR. NO. N62472-90-C-0039

CODE I.D. NO. 80091

DATE: 10/06/97

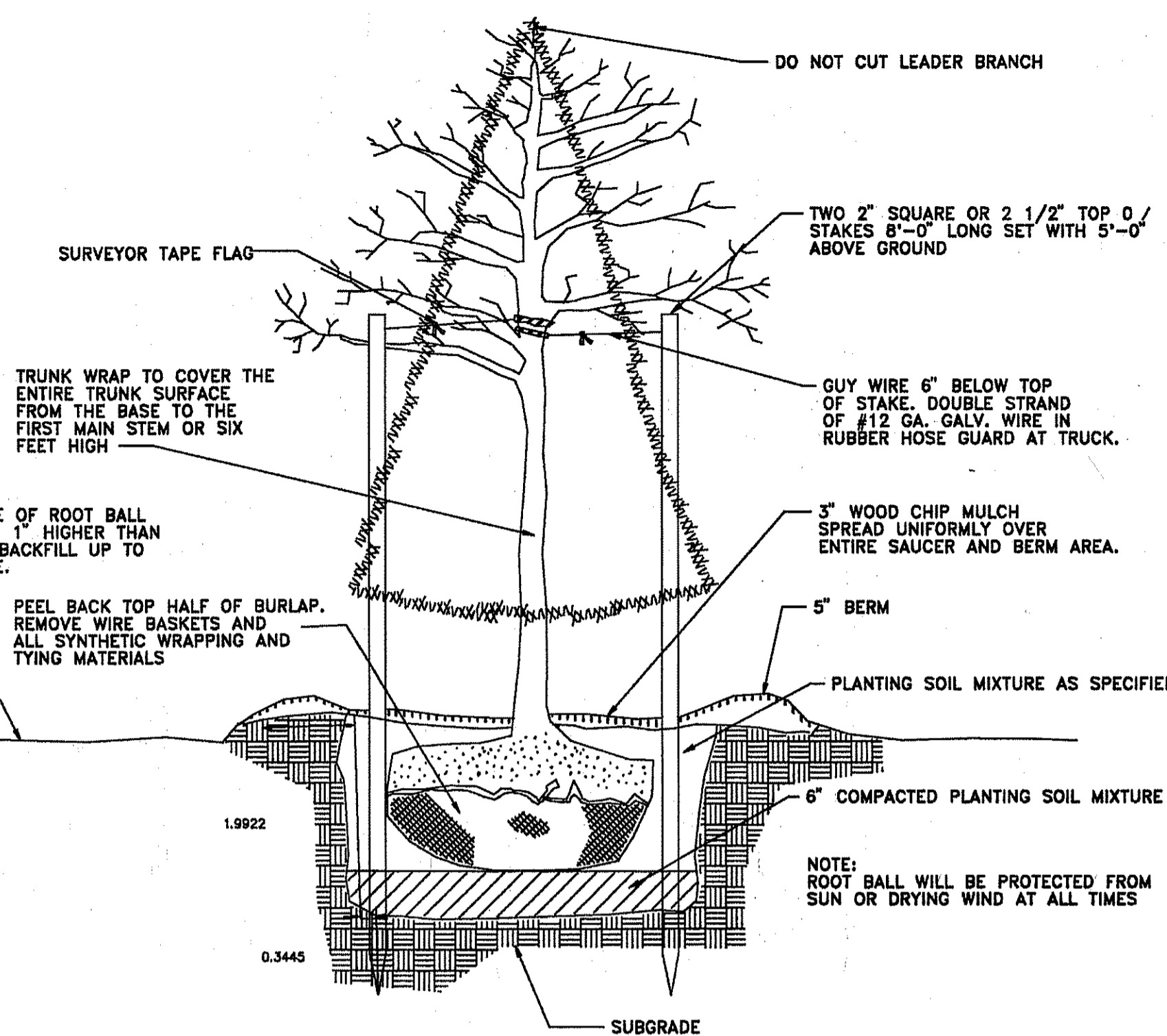
DIS. BY: D

C-8



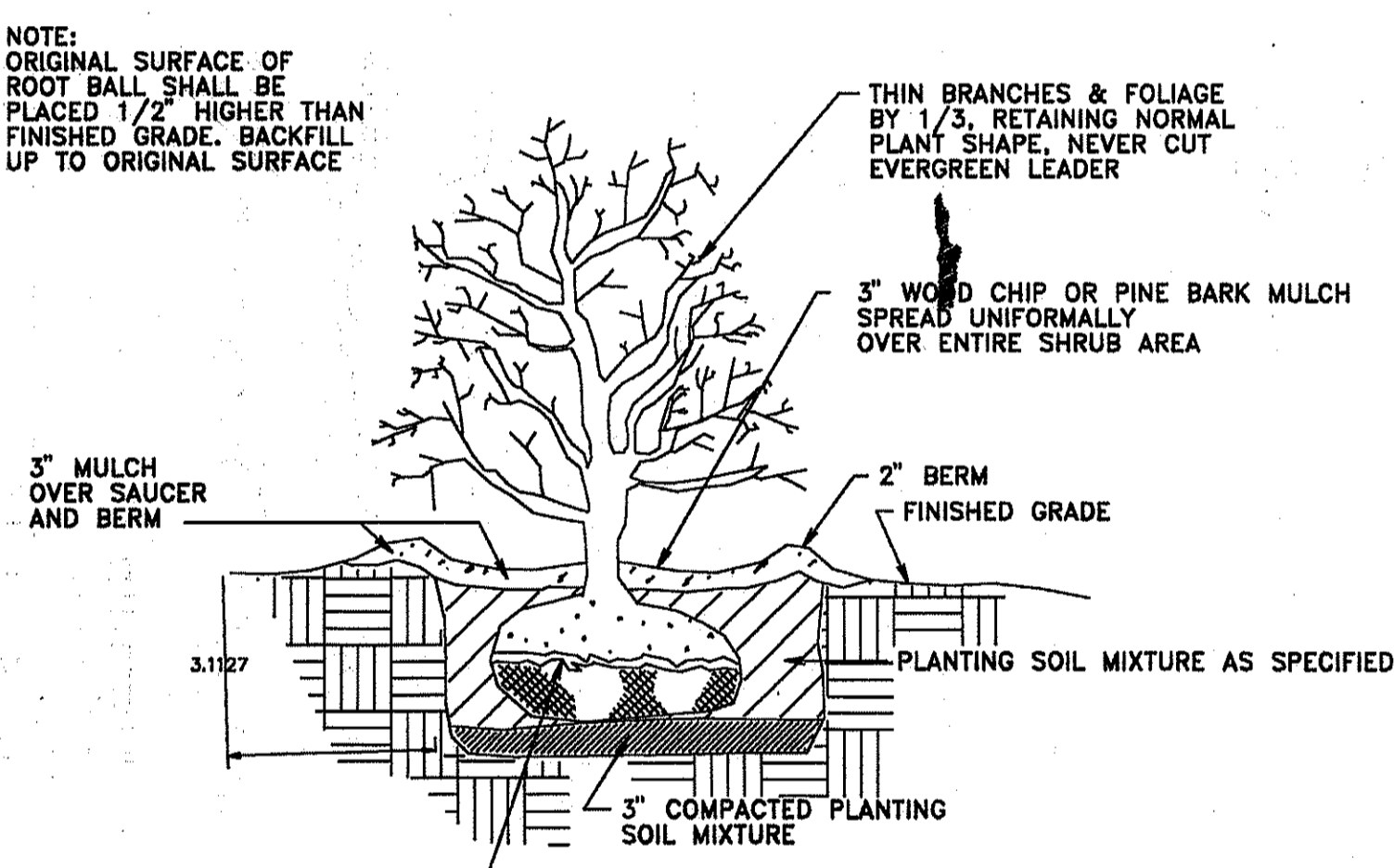
17 HANDICAPPED PARKING SIGN DETAIL

NOT TO SCALE



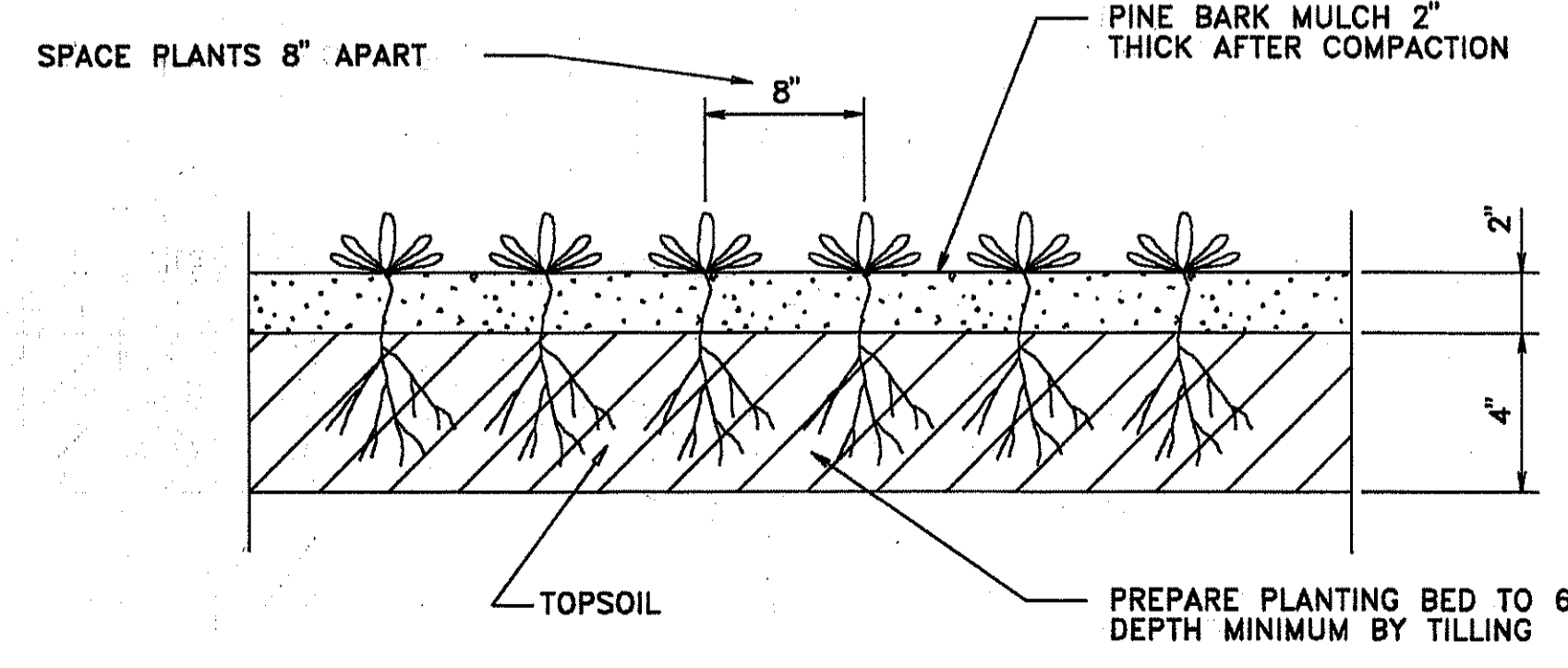
14 TREE PLANTING DETAIL

FOR DECIDUOUS AND EVERGREEN TREES NOT TO SCALE



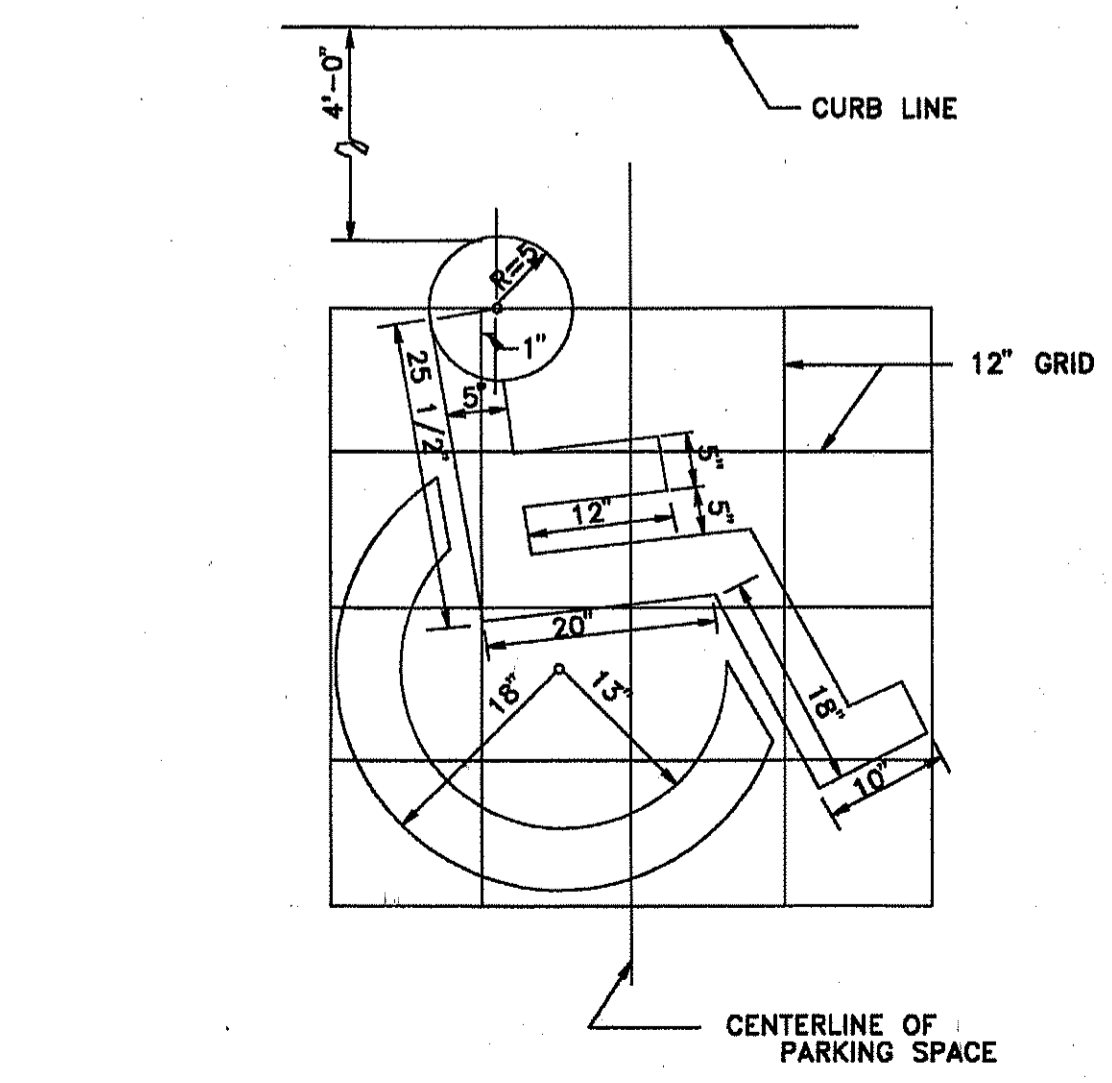
15 SHRUB PLANTING DETAIL

NOT TO SCALE



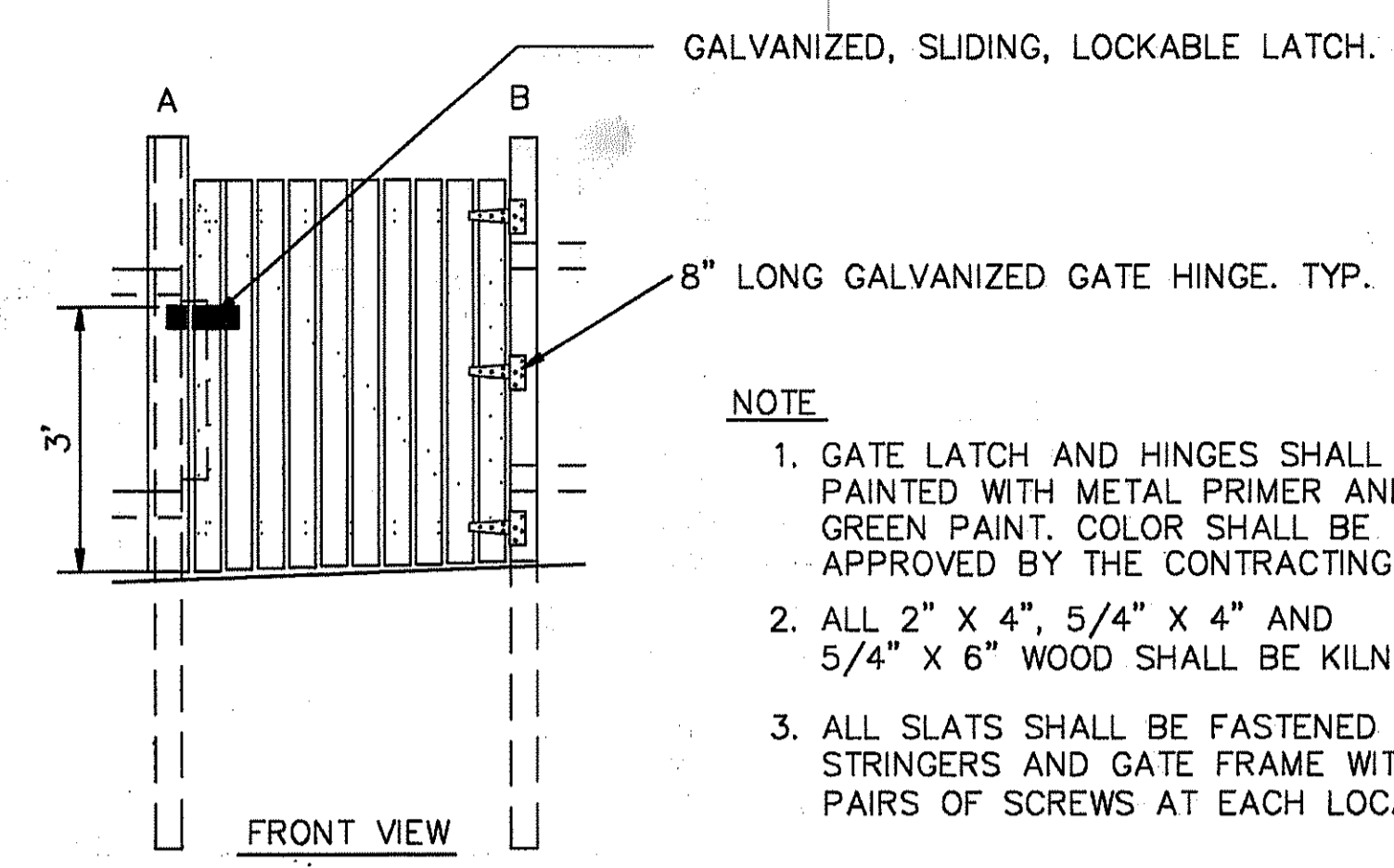
16 GROUNDCOVER PLANTING

NOT TO SCALE

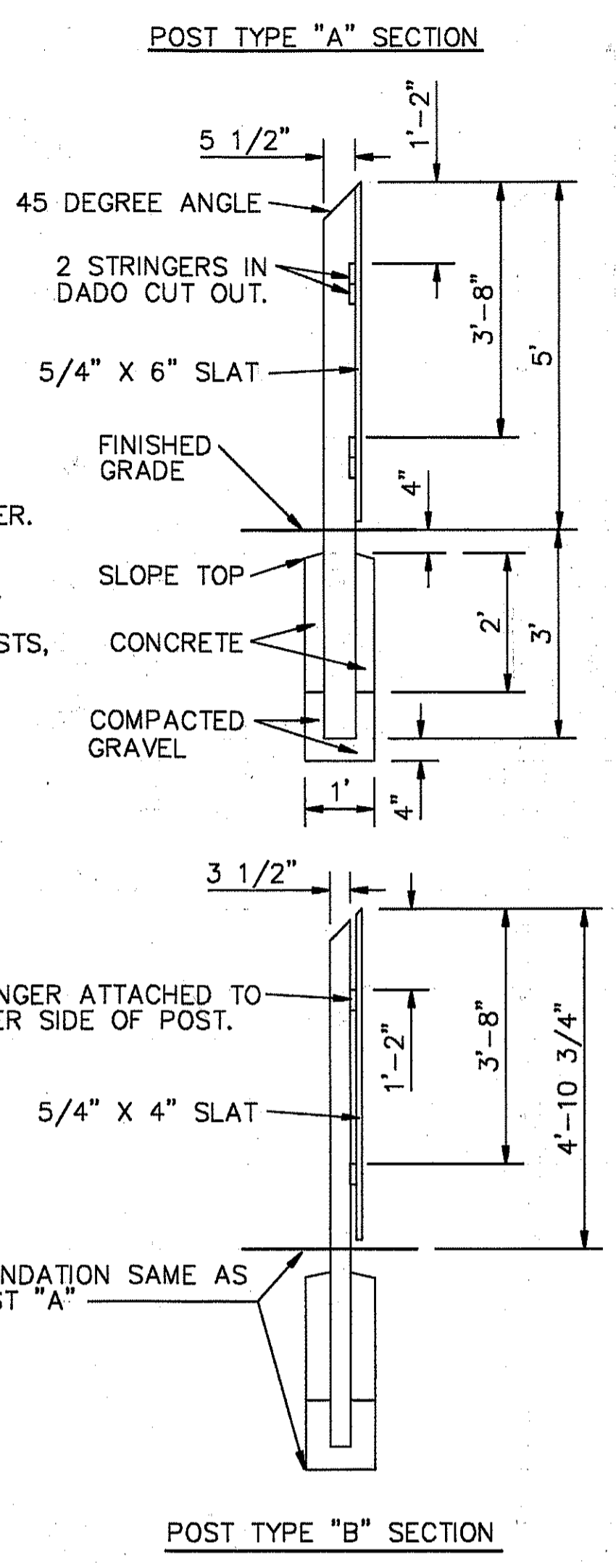


18 HANDICAP PARKING SYMBOL

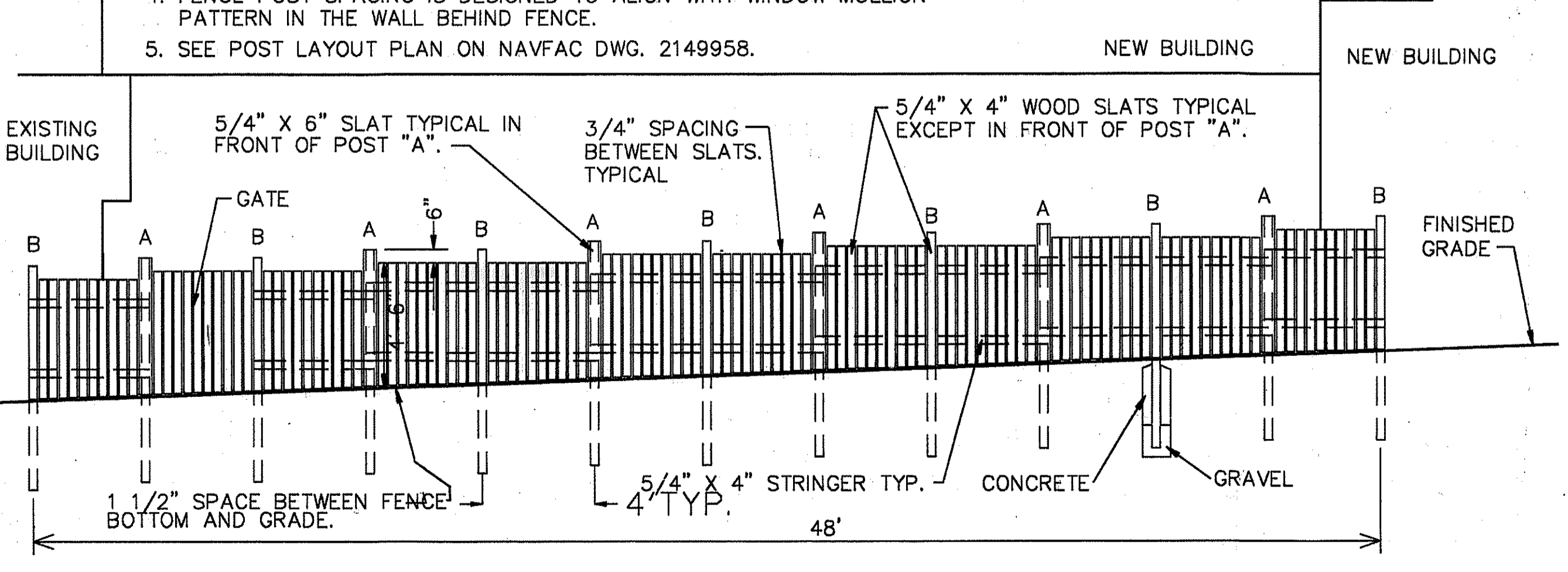
NOT TO SCALE



GATE DETAILS 1/2" = 1"

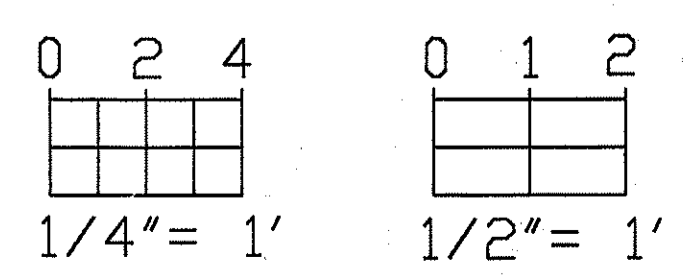


- NOTES:
- ALL WOOD SHALL BE PRESSURE TREATED SOUTHERN YELLOW PINE. ALL 5/4" X 4" AND 6" WOOD SHALL BE KILN DRIED.
  - ALL WOOD SHALL BE FASTENED WITH GALVANIZED WOOD SCREWS AND HEADS SHALL BE FLUSH WITH FACE OF WOOD.
  - ALL WOOD SHALL RECEIVE 2 COATINGS OF EXTERIOR OIL, SEMI-TRANSPARENT, COMBINATION STAIN AND PRESERVATIVE. USE GREEN COLOR TO BE APPROVED BY THE CONTRACTING OFFICER.
  - FENCE POST SPACING IS DESIGNED TO ALIGN WITH WINDOW MULLION PATTERN IN THE WALL BEHIND FENCE.
  - SEE POST LAYOUT PLAN ON NAVFAC DWG. 2149958.

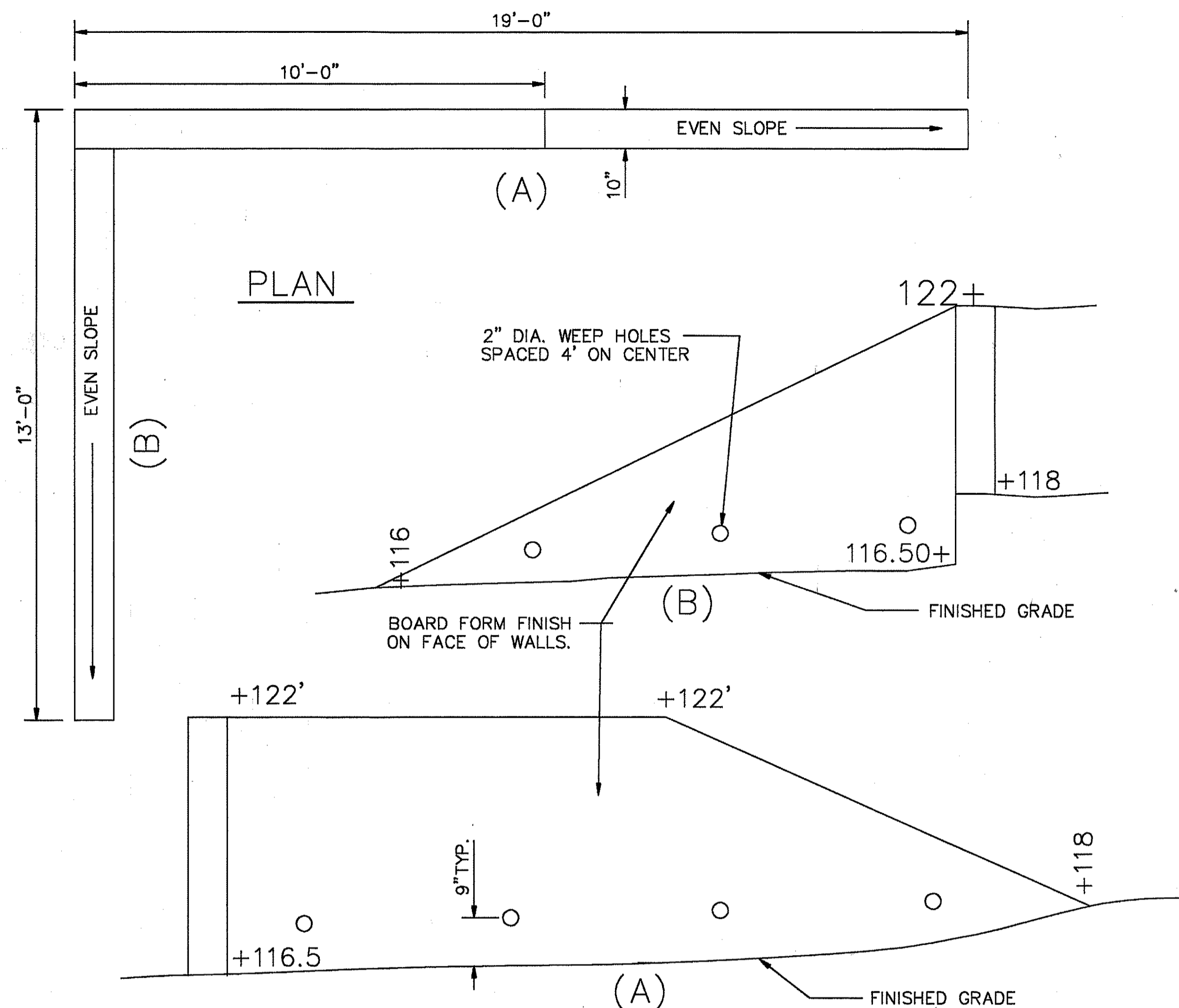


19 PLAY AREA WOOD FENCE

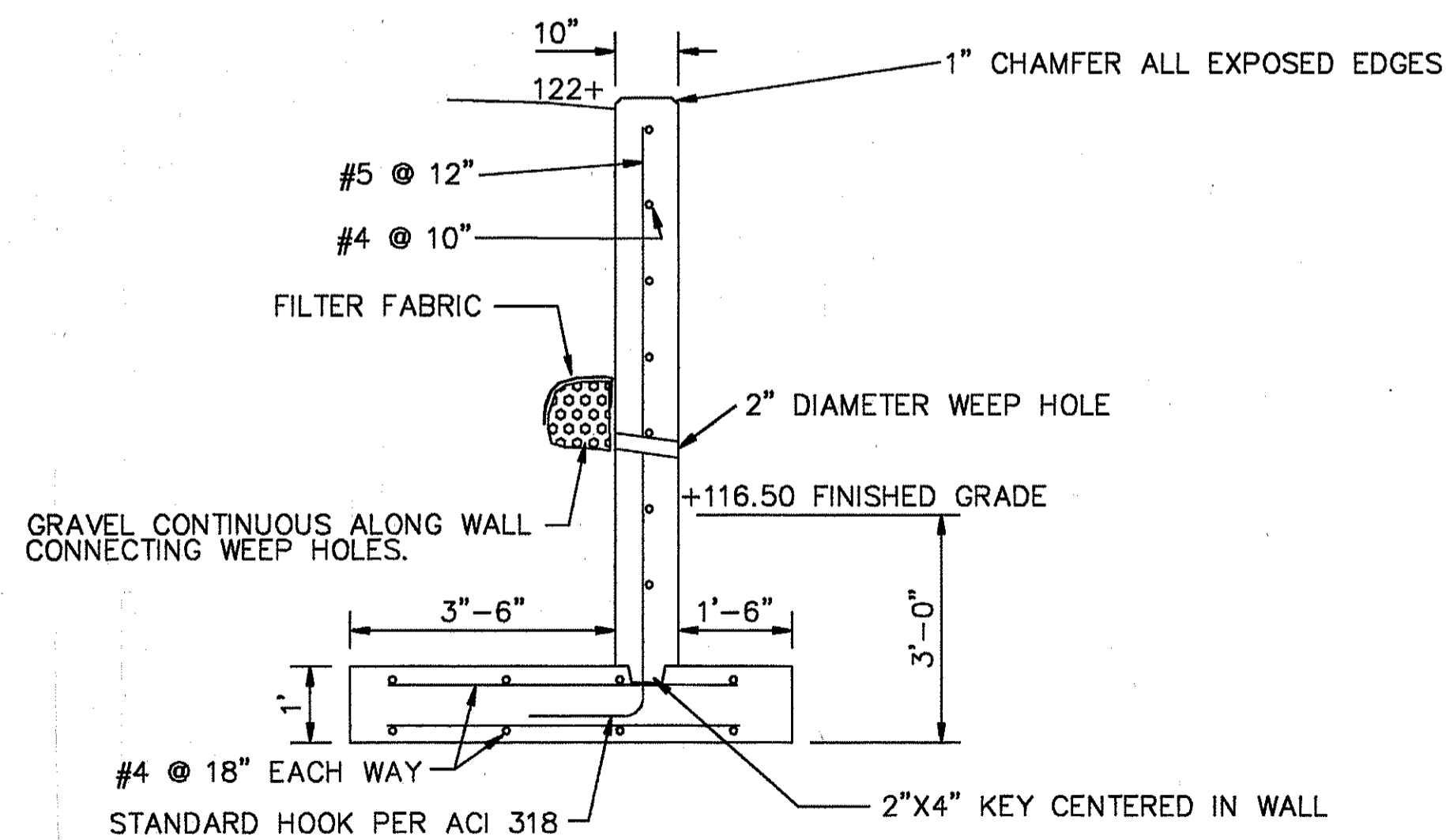
1/4" = 1'



DESIGNED BY: DAVID COOPER	DRAWN BY: DC-CADD	CHECKED BY:	DATE: 5/12/94
APPROVED:	DATE:	PREP BY: N.C.	DESCRIPTION: AS-BUILT CHANGES
REVISIONS:	NO. 1	DATE:	DESCRIPTION:
REVISIONS:	NO. 2	DATE:	DESCRIPTION:
REVISIONS:	NO. 3	DATE:	DESCRIPTION:
REVISIONS:	NO. 4	DATE:	DESCRIPTION:
REVISIONS:	NO. 5	DATE:	DESCRIPTION:
REVISIONS:	NO. 6	DATE:	DESCRIPTION:
REVISIONS:	NO. 7	DATE:	DESCRIPTION:
REVISIONS:	NO. 8	DATE:	DESCRIPTION:
REVISIONS:	NO. 9	DATE:	DESCRIPTION:
REVISIONS:	NO. 10	DATE:	DESCRIPTION:
REVISIONS:	NO. 11	DATE:	DESCRIPTION:
REVISIONS:	NO. 12	DATE:	DESCRIPTION:
REVISIONS:	NO. 13	DATE:	DESCRIPTION:
REVISIONS:	NO. 14	DATE:	DESCRIPTION:
REVISIONS:	NO. 15	DATE:	DESCRIPTION:
REVISIONS:	NO. 16	DATE:	DESCRIPTION:
REVISIONS:	NO. 17	DATE:	DESCRIPTION:
REVISIONS:	NO. 18	DATE:	DESCRIPTION:
REVISIONS:	NO. 19	DATE:	DESCRIPTION:
REVISIONS:	NO. 20	DATE:	DESCRIPTION:
REVISIONS:	NO. 21	DATE:	DESCRIPTION:
REVISIONS:	NO. 22	DATE:	DESCRIPTION:
REVISIONS:	NO. 23	DATE:	DESCRIPTION:
REVISIONS:	NO. 24	DATE:	DESCRIPTION:
REVISIONS:	NO. 25	DATE:	DESCRIPTION:
REVISIONS:	NO. 26	DATE:	DESCRIPTION:
REVISIONS:	NO. 27	DATE:	DESCRIPTION:
REVISIONS:	NO. 28	DATE:	DESCRIPTION:
REVISIONS:	NO. 29	DATE:	DESCRIPTION:
REVISIONS:	NO. 30	DATE:	DESCRIPTION:
REVISIONS:	NO. 31	DATE:	DESCRIPTION:
REVISIONS:	NO. 32	DATE:	DESCRIPTION:
REVISIONS:	NO. 33	DATE:	DESCRIPTION:
REVISIONS:	NO. 34	DATE:	DESCRIPTION:
REVISIONS:	NO. 35	DATE:	DESCRIPTION:
REVISIONS:	NO. 36	DATE:	DESCRIPTION:
REVISIONS:	NO. 37	DATE:	DESCRIPTION:
REVISIONS:	NO. 38	DATE:	DESCRIPTION:
REVISIONS:	NO. 39	DATE:	DESCRIPTION:
REVISIONS:	NO. 40	DATE:	DESCRIPTION:
REVISIONS:	NO. 41	DATE:	DESCRIPTION:
REVISIONS:	NO. 42	DATE:	DESCRIPTION:
REVISIONS:	NO. 43	DATE:	DESCRIPTION:
REVISIONS:	NO. 44	DATE:	DESCRIPTION:
REVISIONS:	NO. 45	DATE:	DESCRIPTION:
REVISIONS:	NO. 46	DATE:	DESCRIPTION:
REVISIONS:	NO. 47	DATE:	DESCRIPTION:
REVISIONS:	NO. 48	DATE:	DESCRIPTION:
REVISIONS:	NO. 49	DATE:	DESCRIPTION:
REVISIONS:	NO. 50	DATE:	DESCRIPTION:
REVISIONS:	NO. 51	DATE:	DESCRIPTION:
REVISIONS:	NO. 52	DATE:	DESCRIPTION:
REVISIONS:	NO. 53	DATE:	DESCRIPTION:
REVISIONS:	NO. 54	DATE:	DESCRIPTION:
REVISIONS:	NO. 55	DATE:	DESCRIPTION:
REVISIONS:	NO. 56	DATE:	DESCRIPTION:
REVISIONS:	NO. 57	DATE:	DESCRIPTION:
REVISIONS:	NO. 58	DATE:	DESCRIPTION:
REVISIONS:	NO. 59	DATE:	DESCRIPTION:
REVISIONS:	NO. 60	DATE:	DESCRIPTION:
REVISIONS:	NO. 61	DATE:	DESCRIPTION:
REVISIONS:	NO. 62	DATE:	DESCRIPTION:
REVISIONS:	NO. 63	DATE:	DESCRIPTION:
REVISIONS:	NO. 64	DATE:	DESCRIPTION:
REVISIONS:	NO. 65	DATE:	DESCRIPTION:
REVISIONS:	NO. 66	DATE:	DESCRIPTION:
REVISIONS:	NO. 67	DATE:	DESCRIPTION:
REVISIONS:	NO. 68	DATE:	DESCRIPTION:
REVISIONS:	NO. 69	DATE:	DESCRIPTION:
REVISIONS:	NO. 70	DATE:	DESCRIPTION:
REVISIONS:	NO. 71	DATE:	DESCRIPTION:
REVISIONS:	NO. 72	DATE:	DESCRIPTION:
REVISIONS:	NO. 73	DATE:	DESCRIPTION:
REVISIONS:	NO. 74	DATE:	DESCRIPTION:
REVISIONS:	NO. 75	DATE:	DESCRIPTION:
REVISIONS:	NO. 76	DATE:	DESCRIPTION:
REVISIONS:	NO. 77	DATE:	DESCRIPTION:
REVISIONS:	NO. 78	DATE:	DESCRIPTION:
REVISIONS:	NO. 79	DATE:	DESCRIPTION:
REVISIONS:	NO. 80	DATE:	DESCRIPTION:
REVISIONS:	NO. 81	DATE:	DESCRIPTION:
REVISIONS:	NO. 82	DATE:	DESCRIPTION:
REVISIONS:	NO. 83	DATE:	DESCRIPTION:
REVISIONS:	NO. 84	DATE:	DESCRIPTION:
REVISIONS:	NO. 85	DATE:	DESCRIPTION:
REVISIONS:	NO. 86	DATE:	DESCRIPTION:
REVISIONS:	NO. 87	DATE:	DESCRIPTION:
REVISIONS:	NO. 88	DATE:	DESCRIPTION:
REVISIONS:	NO. 89	DATE:	DESCRIPTION:
REVISIONS:	NO. 90	DATE:	DESCRIPTION:
REVISIONS:	NO. 91	DATE:	DESCRIPTION:
REVISIONS:	NO. 92	DATE:	DESCRIPTION:
REVISIONS:	NO. 93	DATE:	DESCRIPTION:
REVISIONS:	NO. 94	DATE:	DESCRIPTION:
REVISIONS:	NO. 95	DATE:	DESCRIPTION:
REVISIONS:	NO. 96	DATE:	DESCRIPTION:
REVISIONS:	NO. 97	DATE:	DESCRIPTION:
REVISIONS:	NO. 98	DATE:	DESCRIPTION:
REVISIONS:	NO. 99	DATE:	DESCRIPTION:
REVISIONS:	NO. 100	DATE:	DESCRIPTION:

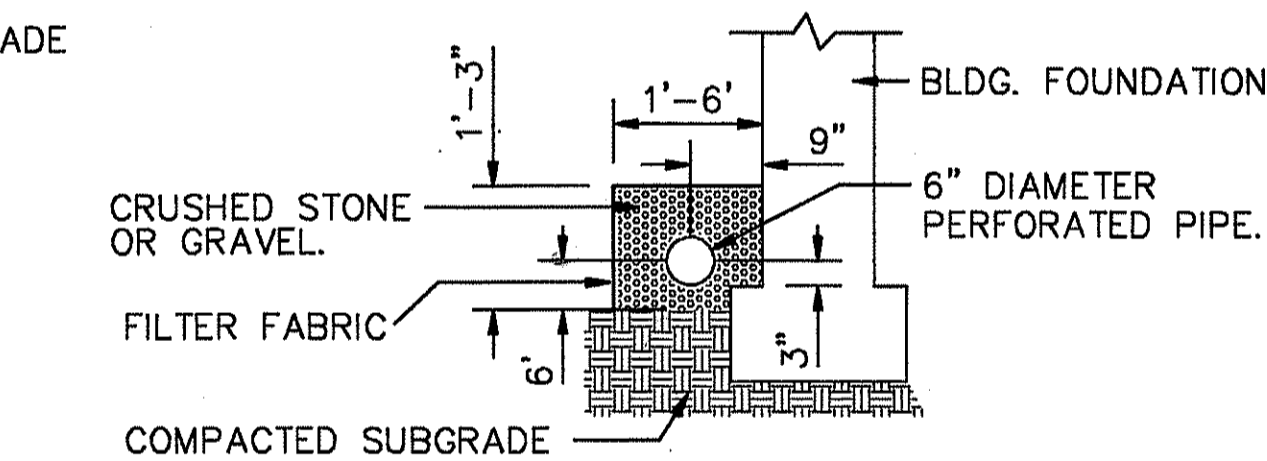


ELEVATIONS

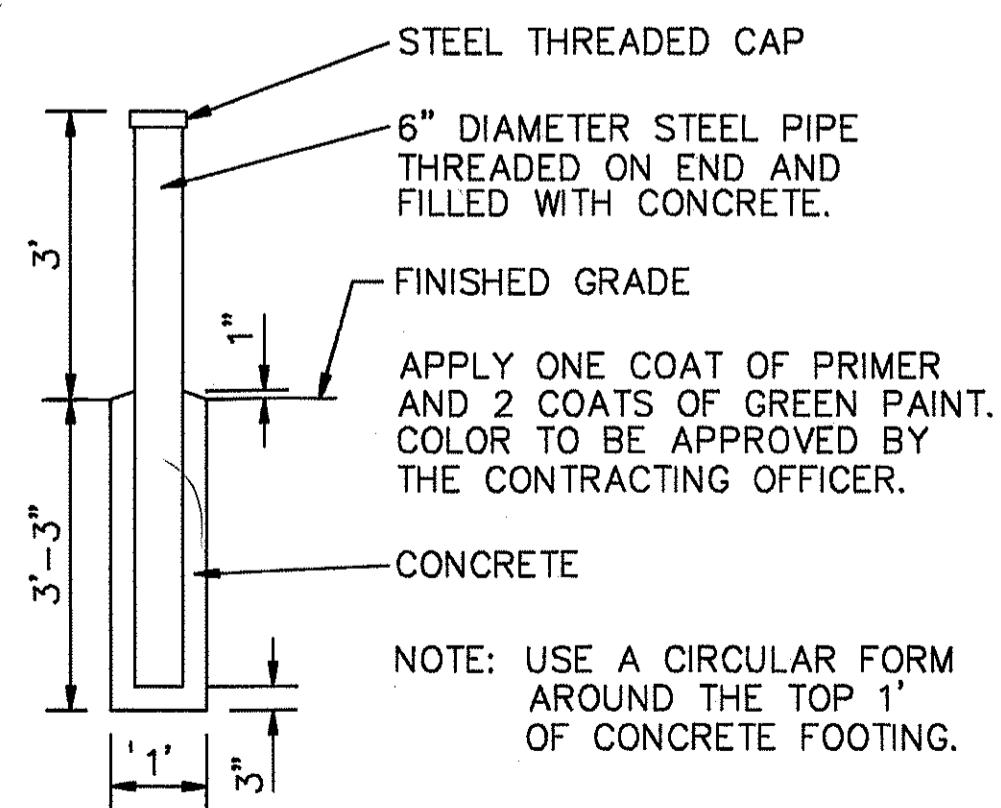


SECTION

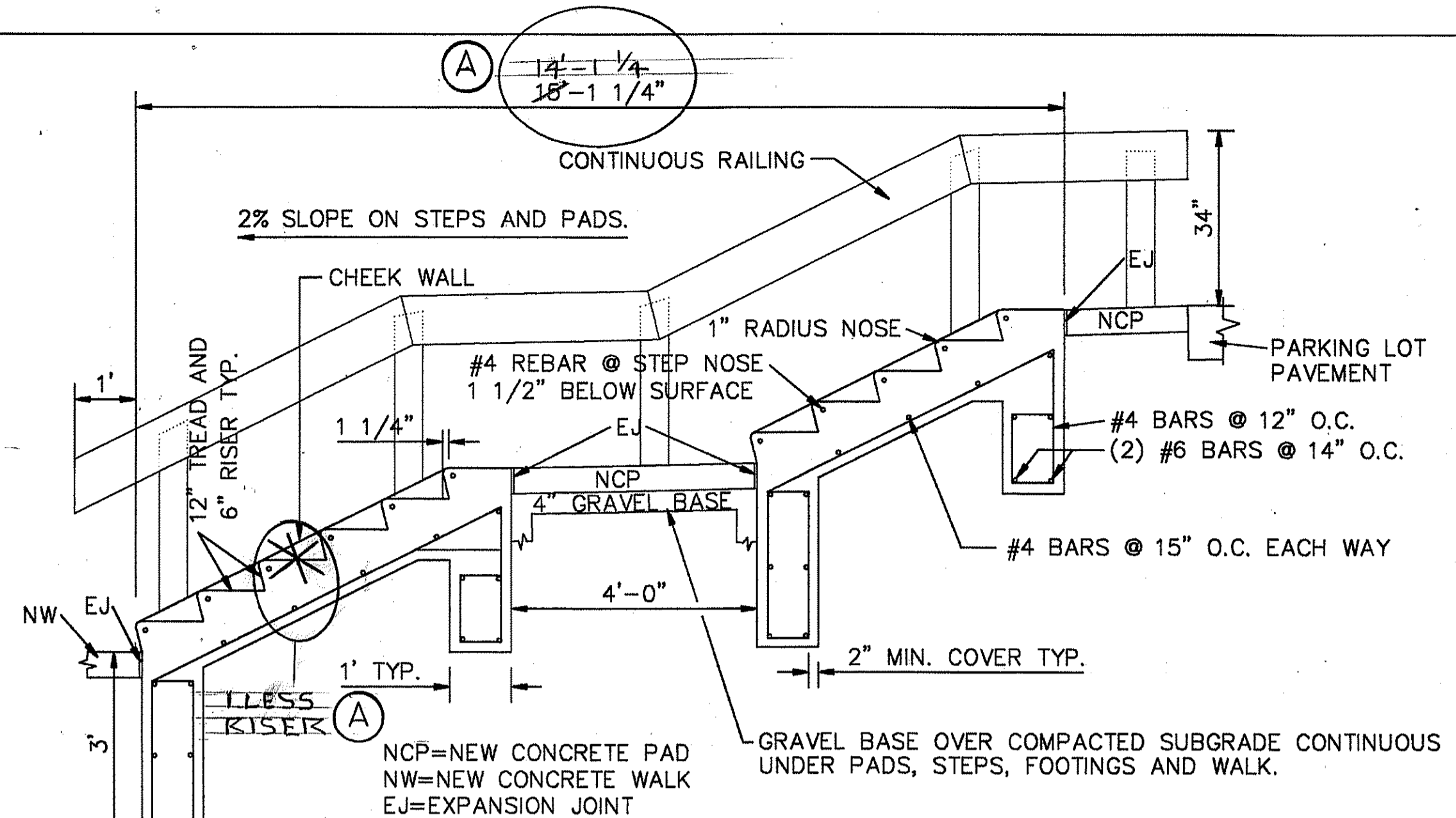
20 CONCRETE RETAINING WALL  
C5/C10



23 FOUNDATION DRAIN  
C3/C10

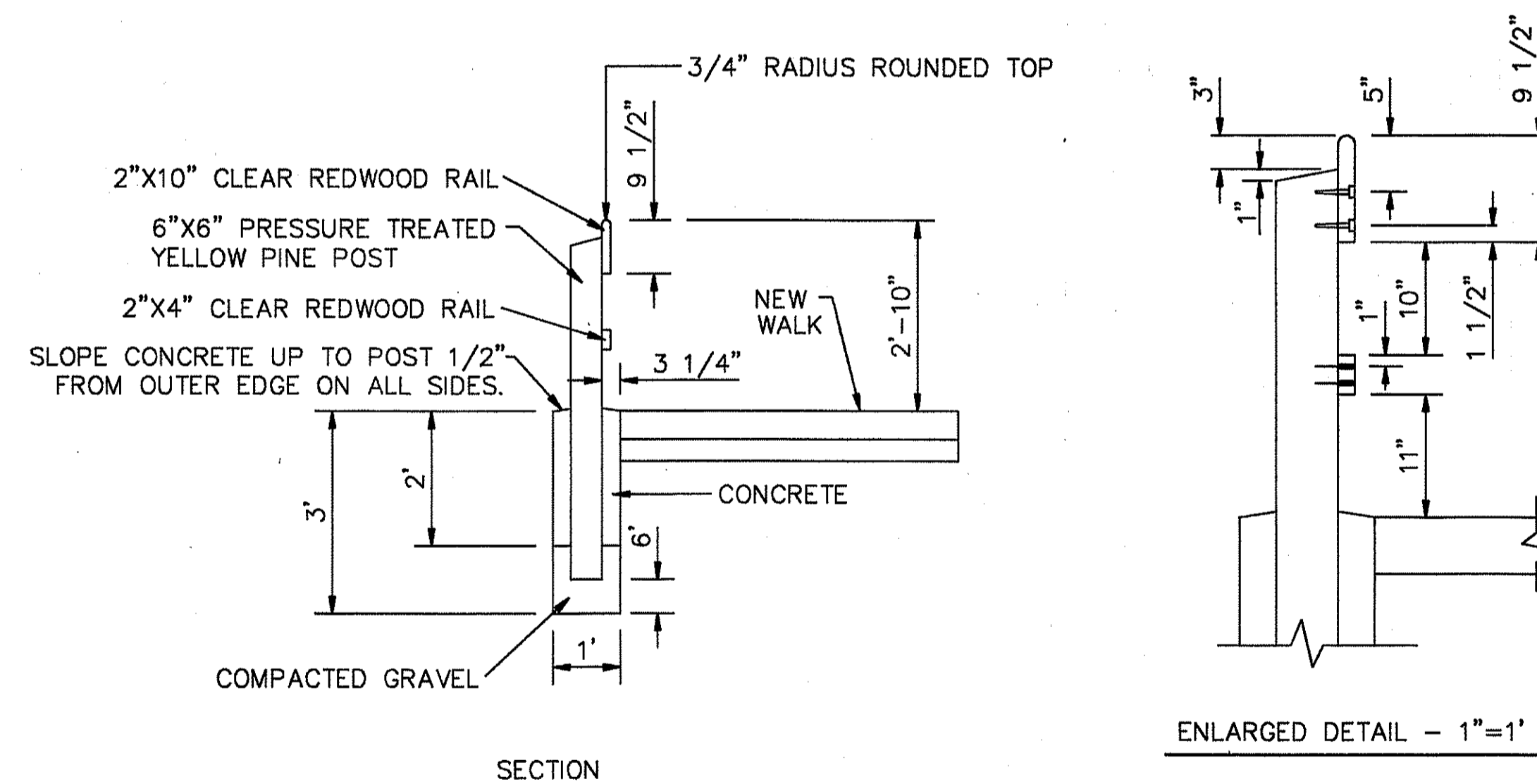


22 GUARD POST  
C5/C10



- NOTES:
- CHEEK WALLS SHALL BE 8" WIDE X 12" DEEP AND CAST AS PART OF THE STAIRS. TOP OF WALL SHALL BE FLUSH WITH STEP NOSE AND ALL EXPOSED EDGES SHALL HAVE A 1" CHAMFER.
  - PROVIDE CONTINUOUS RAILING ON BOTH SIDES OF STAIRS. CONSTRUCT AS PER DETAIL #24, EXCEPT POSTS SHALL BE INSTALLED AGAINST THE CHEEK WALLS, AND AS SHOWN ABOVE.

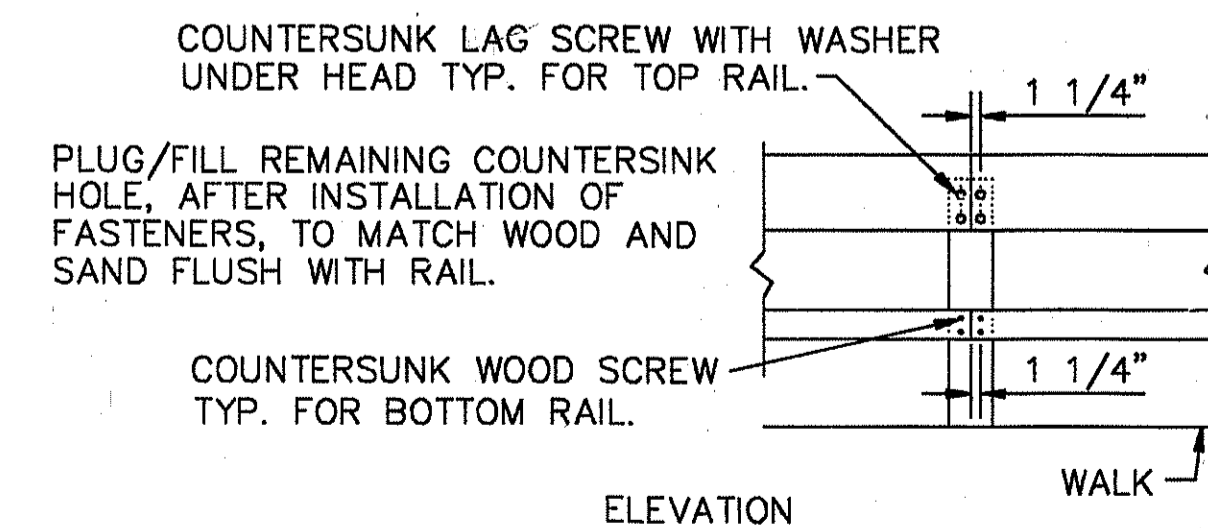
21 CONCRETE STAIRS  
C5/C10



NOTES:

- SEE NAVFAC DWG. 2149960 AND DETAIL #21 FOR THE LOCATION OF FENCE POSTS.
- USE A 1'X1' SQUARE WOOD FORM AROUND THE TOP 6" DEPTH OF CONCRETE FOOTING.
- APPLY 2 COATINGS OF REDWOOD COLORED, EXTERIOR OIL, SEMI-TRANSPARENT STAIN AND PRESERVATIVE TO POSTS BEFORE ATTACHING RAILS. COLOR TO BE APPROVED BY THE CONTRACTING OFFICER.

24 WOOD RAILING  
C5/C10



ELEVATION



DESIGNED BY:	DAVID COOPER
DRAWN BY:	DC-CADD
CHECKED BY:	
DATE:	5/17/94
APPROVED:	
PREP BY:	NA-5
DESCRIPTION:	CHANGLED TO AS-BUILT
REV.:	(A)
ENGINEERING COMMAND:	PHILADELPHIA, PA.
OFFICE:	GROTON, CT
DEPARTMENT OF THE NAVY:	
NAVAL BASE:	NAVAL SUBMARINE BASE NEW LONDON
NAVFAC DRAWING NO.:	2149984
SHEET:	12 OF 61
SIZE:	DIS. SH. NO.
DATE:	04-15-91
APPROVED:	
REVISION FOR COMMANDER, NAVFAC:	

B1001-59